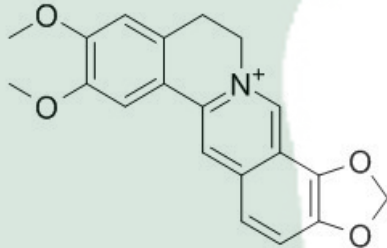


PRODUCT ID	E-1113	Structure 
PRODUCT	Epiberberine Chloride/盐酸表小檗碱	
STANDARD TYPE	Quantitative Reference Material (含量测定)	
LOT NUMBER	18040324	
ASSAY METHOD	HPLC,MS,NMR	
DATE OF SAMPLE	2018-04-03	
DATE OF REPORT	2018-04-03	

OTHER NAME	NA
CHEMICAL FORMULA	C ₂₀ H ₁₈ ClNO ₄
MOLECULAR WEIGHT(MW)	371.81406
CAS NUMBER	6873-9-2
CHEMICAL FAMILY	Alkaloids

ANALYTICAL RESULT

TEST	METHOD	SPECIFICATION	RESULT
HPLC	Q/TFFK170—2007	NLT ≥97.0%	97.3%
NMR		Conforms	Conforms
MS		Conforms	Conforms
Residual Solvent	Q/TFFK170—2007	NA	ND
Water	Q/TFFK170—2007	≤2%	Conforms
Appearance		Yellow Powder	Conforms

STORAGE CONDITIONS

STORAGE Refer to the label

SHELF LIFE 2 Years

Analyst

Checker

Manager

Product Analysis Report

Product Name: Epiberberine Chloride

Chrom-Column C18

Lot Number: 18040324

Mobile Phase: ACN:0.01MNaH2PO4=30:70

Detector: UV

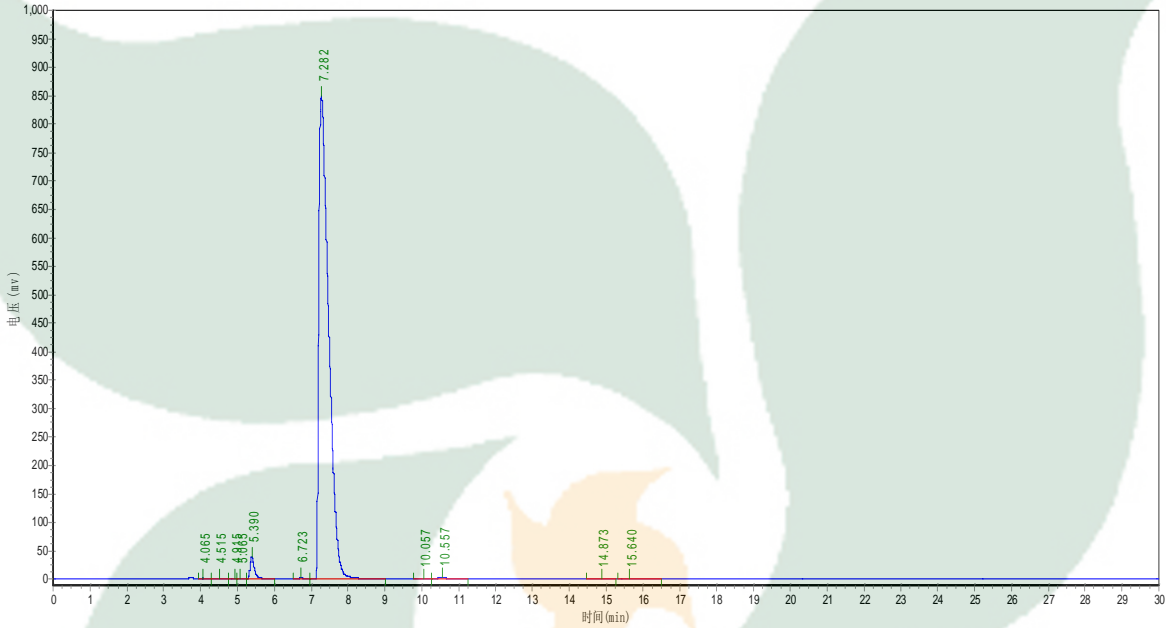
Wavelength: 265nm

Detect Time: 2018-04-03

Inject Vol: 20ul

Sample dissolution: MeOH,0.01MNaH2PO4

Flow: 1.0ml/min



No.	Ret.Time min	Height mAU	Area mAU*min	Rel.Area %
1	4.065	1217.000	7981.600	0.0491
2	4.515	361.036	3467.800	0.0213
3	4.915	183.760	1016.680	0.0063
4	5.065	644.520	5716.440	0.0352
5	5.390	39262.000	332139.281	2.0430
6	6.723	1745.690	17931.557	0.1103
7	7.282	849168.688	15824837.000	97.3409
8	10.057	86.483	1426.900	0.0088
9	10.557	3376.138	45047.699	0.2771
10	14.873	116.000	2053.100	0.0126
11	15.640	728.099	15510.200	0.0954