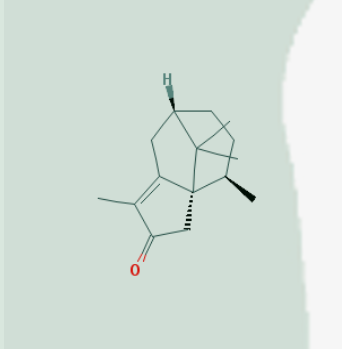


<b>PRODUCT ID</b>	E-3344	<b>Structure</b> 
<b>PRODUCT</b>	cyperotundone/香附烯酮	
<b>STANDARD TYPE</b>	Qualitative Analysis/鉴别	
<b>LOT NUMBER</b>	18051522	
<b>ASSAY METHOD</b>	HPLC,MS,NMR	
<b>DATE OF SAMPLE</b>	2018-05-15	
<b>DATE OF REPORT</b>	2018-05-15	

**OTHER NAME** Isopatchoulenone,cyperenone

**CHEMICAL FORMULA** C<sub>15</sub>H<sub>20</sub>O

**MOLECULAR WEIGHT(MW)** 218

**CAS NUMBER** 3466-15-7

**CHEMICAL FAMILY** Miscellaneous

#### ANALYTICAL RESULT

TEST	METHOD	SPECIFICATION	RESULT
HPLC	Q/TFFK675—2010	NLT ≥95.0%	95.5%
NMR		Conforms	Conforms
MS		Conforms	Conforms
<b>Residual Solvent</b>	Q/TFFK675—2010	NA	ND
<b>Water</b>	Q/TFFK675—2010	≤2%	Conforms
<b>Appearance</b>		liquid	Conforms

#### STORAGE CONDITIONS

**STORAGE** Refer to the label  
**SHELF LIFE** 2 Years

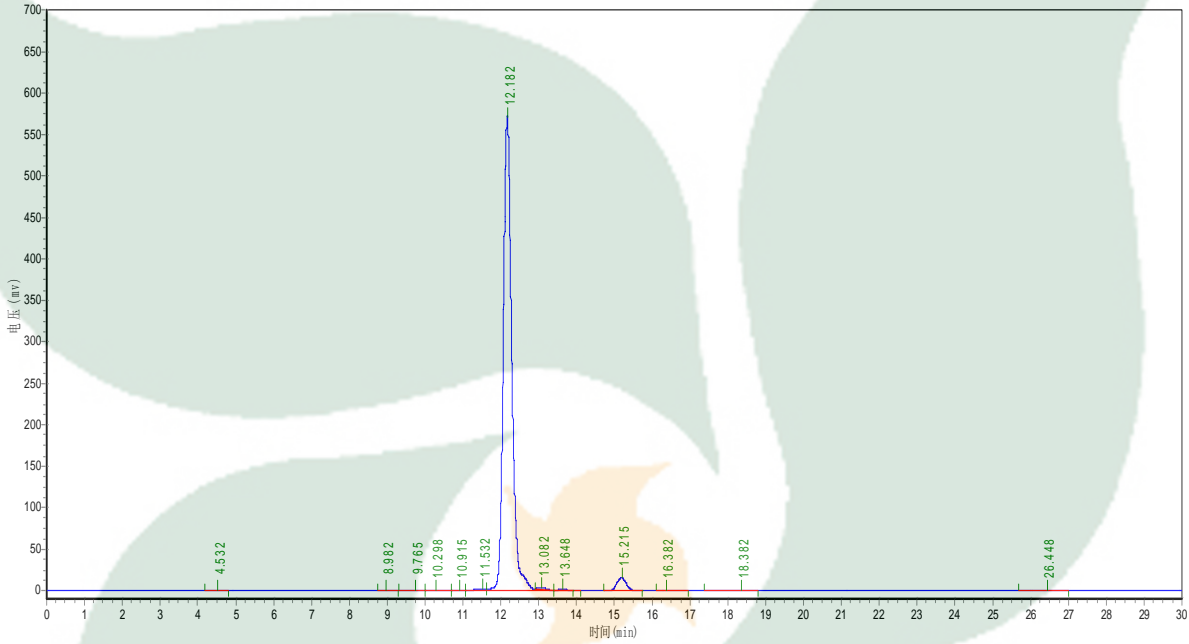
Analyst

Checker

Manager

# Product Analysis Report

**Product Name:** cyperotundone **Chrom-Column** C18  
**Lot Number:** 18051522 **Mobile Phase:** ACN:H2O=65:35  
**Detector:** UV **Wavelength:** 247nm  
**Detect Time:** 2018-05-15 **Inject Vol:** 20ul  
**Sample dissolution:** MeOH **Flow:** 1.0ml/min



No.	Ret.Time min	Height mAU	Area mAU*min	Rel.Area %
1	4.532	696.730	9433.000	0.1005
2	8.982	102.606	1412.600	0.0151
3	9.765	206.917	3835.787	0.0409
4	10.298	1043.077	20156.686	0.2148
5	10.915	508.481	8840.520	0.0942
6	11.532	1737.886	39192.836	0.4177
7	12.182	566851.000	8970275.000	95.5930
8	13.082	2268.667	28539.400	0.3041
9	13.648	1720.000	24272.229	0.2587
10	15.215	15288.871	270199.094	2.8794
11	16.382	124.640	2138.900	0.0228
12	18.382	182.698	4105.200	0.0437
13	26.448	38.975	1414.800	0.0151