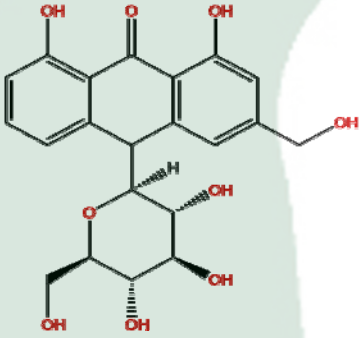


<b>PRODUCT ID</b>	E-2882	<p style="text-align: center;"><b>Structure</b></p> 
<b>PRODUCT</b>	Aloin(mixture of A&B)/芦荟苷	
<b>STANDARD TYPE</b>	Quantitative Reference Material (含量测定)	
<b>LOT NUMBER</b>	18050921	
<b>ASSAY METHOD</b>	HPLC,MS,NMR	
<b>DATE OF SAMPLE</b>	2018-05-09	
<b>DATE OF REPORT</b>	2018-05-09	

<b>OTHER NAME</b>	NA
<b>CHEMICAL FORMULA</b>	C <sub>21</sub> H <sub>22</sub> O <sub>9</sub>
<b>MOLECULAR WEIGHT(MW)</b>	418.398
<b>CAS NUMBER</b>	8015-61-0
<b>CHEMICAL FAMILY</b>	Anthraquinones

**ANALYTICAL RESULT**

TEST	METHOD	SPECIFICATION	RESULT
HPLC	Q/TFFK669—2010	NLT ≥96.0%	96.7%
NMR		Conforms	Conforms
MS		Conforms	Conforms
<b>Residual Solvent</b>	Q/TFFK542—2007	NA	ND
<b>Water</b>	Q/TFFK542—2007	≤2%	Conforms
<b>Appearance</b>		Yellow Powder	Conforms

**STORAGE CONDITIONS**

STORAGE

Refer to the label

SHELF LIFE

2 Years

Analyst

Checker

Manager

# Product Analysis Report

**Product Name:** Aloin(mixture of A&B) **Chrom-Column** C18

**Lot Number:** 18050921

**Mobile Phase:** ACN:0.1%H<sub>3</sub>PO<sub>4</sub>=25:75

**Detector:** UV

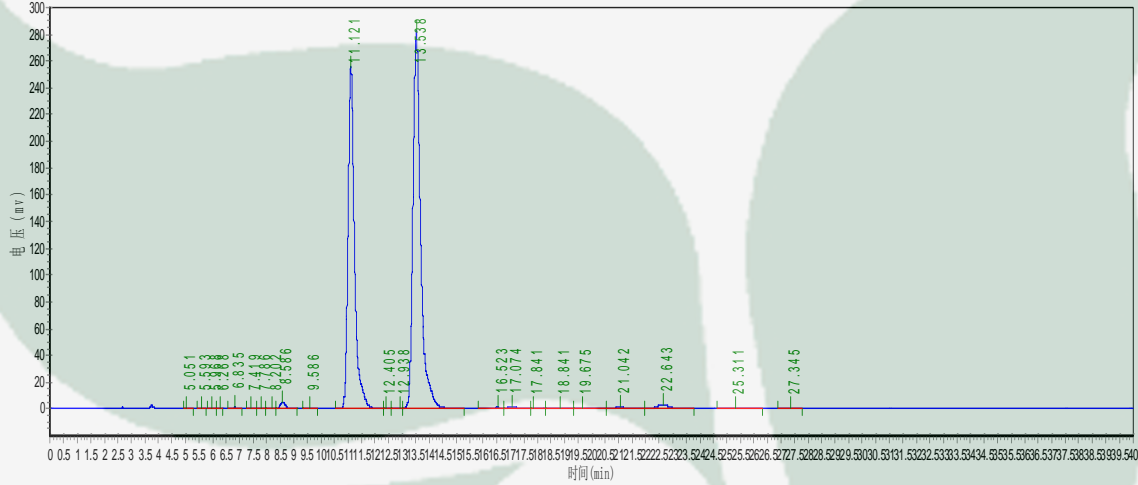
**Wavelength:** 293nm

**Detect Time:** 2018-05-09

**Inject Vol:** 20ul

**Sample dissolution:** ACN:0.1%H<sub>3</sub>PO<sub>4</sub>=1:1

**Flow:** 1.0ml/min



No.	Ret.Time min	Height mAU	Area mAU*min	Rel.Area %
1	5.051	357.070	2993.700	0.0295
2	5.593	488.561	3801.700	0.0374
3	5.968	167.231	1652.950	0.0163
4	6.268	283.400	2046.860	0.0201
5	6.835	646.667	7316.900	0.0720
6	7.419	230.830	2615.350	0.0257
7	7.786	163.310	1776.163	0.0175
8	8.202	183.506	2661.683	0.0262
9	8.586	4996.965	65171.508	0.6412
10	9.586	361.034	6635.407	0.0653
11	11.121	255706.047	4261815.500	41.9305
12	12.405	196.168	3355.800	0.0330
13	12.938	327.074	5240.916	0.0516
14	13.538	282357.844	5577671.500	54.8768
15	16.523	822.396	20674.242	0.2034

16	17.074	1317.707	38529.633	0.3791
17	17.841	232.473	5196.990	0.0511
18	18.841	363.039	12055.659	0.1186
19	19.675	181.177	5587.676	0.0550
20	21.042	1225.897	33458.660	0.3292
21	22.643	2777.567	89961.945	0.8851
22	25.311	206.828	11647.965	0.1146
23	27.345	80.630	2123.900	0.0209

