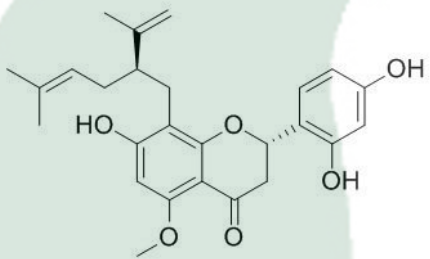


<b>PRODUCT ID</b>	E-1941	<p><b>Structure</b></p> 
<b>PRODUCT</b>	Kurarinone/苦参酮	
<b>STANDARD TYPE</b>	Quantitative Reference Material (含量测定)	
<b>LOT NUMBER</b>	18060822	
<b>ASSAY METHOD</b>	HPLC,MS,NMR	
<b>DATE OF SAMPLE</b>	2018-06-08	
<b>DATE OF REPORT</b>	2018-06-08	

<b>OTHER NAME</b>	苦参黄素
<b>CHEMICAL FORMULA</b>	C <sub>26</sub> H <sub>30</sub> O <sub>6</sub>
<b>MOLECULAR WEIGHT(MW)</b>	438.5
<b>CAS NUMBER</b>	34981-26-5
<b>CHEMICAL FAMILY</b>	Flavonoids

**ANALYTICAL RESULT**

TEST	METHOD	SPECIFICATION	RESULT
HPLC	Q/TFFK265—2007	NLT ≥97.0%	97.7%
NMR		Conforms	Conforms
MS		Conforms	Conforms
Residual Solvent	Q/TFFK265—2007	NA	ND
Water	Q/TFFK265—2007	≤2%	Conforms
Appearance		yellow powder	Conforms

**STORAGE CONDITIONS**

STORAGE  
SHELF LIFE  
Analyst

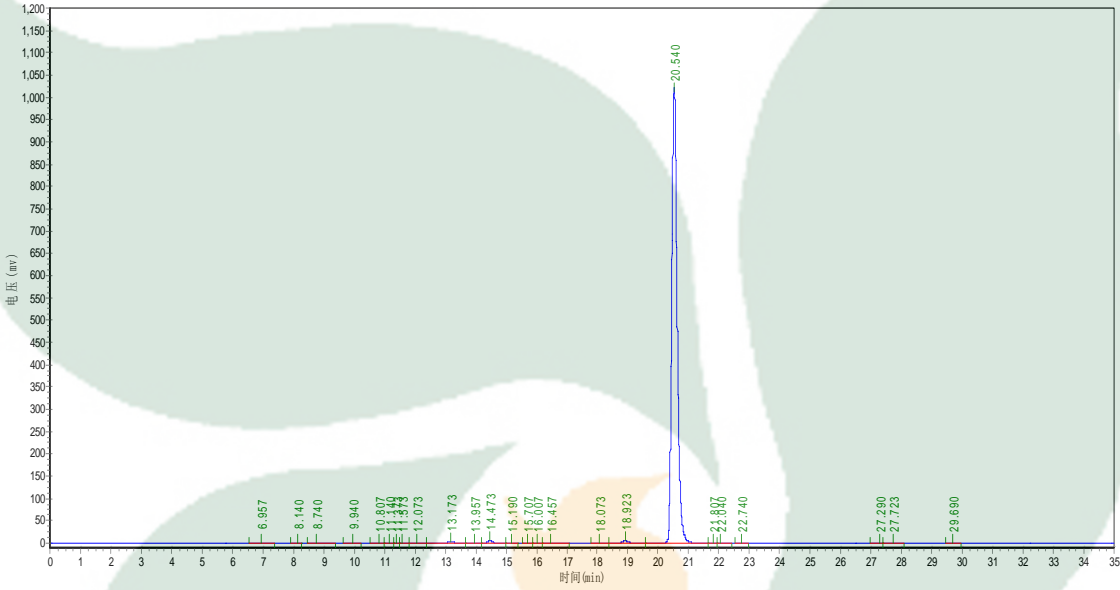
Refer to the label  
2 Years

Checker

Manager

# Product Analysis Report

**Product Name:** Kurarinone **Chrom-Column** C18  
**Lot Number:** 18060822 **Mobile Phase:** ACN:0.1%H3PO4(30%-70%)  
**Detector:** UV **Wavelength:** 290nm  
**Detect Time:** 2018-06-08 **Inject Vol:** 20ul  
**Sample dissolution:** MeOH **Flow:** 1.0ml/min



No.	Ret.Time min	Height mAU	Area mAU*min	Rel.Area %
1	6.957	388.392	5678.200	0.0447
2	8.140	132.710	1714.297	0.0135
3	8.740	1205.793	18573.555	0.1462
4	9.940	111.959	2005.953	0.0158
5	10.807	471.738	7713.231	0.0607
6	11.140	584.337	7325.401	0.0577
7	11.373	267.257	2989.947	0.0235
8	11.573	215.616	2324.312	0.0183
9	12.073	288.015	4120.892	0.0324
10	13.173	1886.491	42804.207	0.3370
11	13.957	1052.149	14992.456	0.1180
12	14.473	4707.328	58138.074	0.4577
13	15.190	218.866	3239.389	0.0255
14	15.707	411.044	4535.381	0.0357
15	16.007	253.083	3569.489	0.0281

16	16.457	278.142	6350.731	0.0500
17	18.073	936.803	11170.292	0.0879
18	18.923	4158.709	56968.371	0.4485
19	20.540	1017944.000	12420091.000	97.7852
20	21.807	218.577	2986.588	0.0235
21	22.040	166.075	2229.358	0.0176
22	22.740	244.500	2462.900	0.0194
23	27.290	114.195	1719.247	0.0135
24	27.723	940.683	15124.684	0.1191
25	29.690	180.906	2567.800	0.0202

