

<b>PRODUCT ID</b>	E-3663	<b>Structure</b> 
<b>PRODUCT</b>	Methyl Caffeate/咖啡酸甲酯	
<b>STANDARD TYPE</b>	Quantitative Reference Material (含量测定)	
<b>LOT NUMBER</b>	18060821	
<b>ASSAY METHOD</b>	HPLC,MS,NMR	
<b>DATE OF SAMPLE</b>	2018-06-08	
<b>DATE OF REPORT</b>	2018-06-08	

<b>OTHER NAME</b>	NA
<b>CHEMICAL FORMULA</b>	C <sub>10</sub> H <sub>10</sub> O <sub>4</sub>
<b>MOLECULAR WEIGHT(MW)</b>	194.18
<b>CAS NUMBER</b>	3843-74-1
<b>CHEMICAL FAMILY</b>	Phenylpropanoids

**ANALYTICAL RESULT**

TEST	METHOD	SPECIFICATION	RESULT
HPLC	Q/TFFK265—2007	NLT ≥98.0%	99.4%
NMR		Conforms	Conforms
MS		Conforms	Conforms
Residual Solvent	Q/TFFK265—2007	NA	ND
Water	Q/TFFK265—2007	≤2%	Conforms
Appearance		Pale white powder	Conforms

**STORAGE CONDITIONS**

STORAGE  
SHELF LIFE  
Analyst

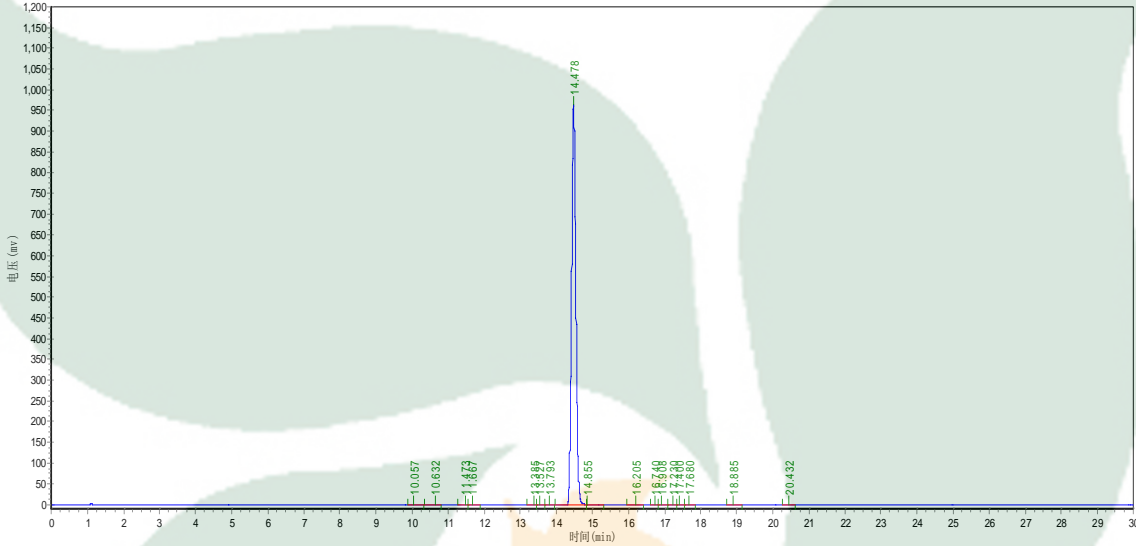
Refer to the label  
2 Years

Checker

Manager

# Product Analysis Report

**Product Name:** Methyl Caffeate      **Chrom-Column** C18  
**Lot Number:** 18060821      **Mobile Phase:** ACN:0.1%H3PO4(5%-95%)  
**Detector:** UV      **Wavelength:** 326nm  
**Detect Time:** 2018-06-08      **Inject Vol:** 20ul  
**Sample dissolution:** MeOH      **Flow:** 1.0ml/min



No.	Ret.Time min	Height mAU	Area mAU*min	Rel.Area %
1	4.410	154.773	1699.100	0.0215
2	10.057	180.471	1825.300	0.0231
3	10.632	604.841	4830.700	0.0612
4	11.473	181.079	1615.475	0.0205
5	11.667	266.253	2690.482	0.0341
6	13.385	342.275	2758.500	0.0350
7	13.527	564.946	3613.969	0.0458
8	13.793	139.074	1153.662	0.0146
9	14.478	963486.313	7844276.500	99.4355
10	14.855	1234.446	9984.472	0.1266
11	16.205	209.402	1778.750	0.0225
12	16.740	228.227	1545.497	0.0196
13	16.908	324.018	2695.529	0.0342
14	17.230	450.428	3369.976	0.0427
15	17.400	282.237	2160.368	0.0274

16	17.680	283.206	2102.962	0.0267
17	18.885	116.562	1009.200	0.0128
18	20.432	168.735	1395.350	0.0177

