



同田生物
TAUTO BIOTECH

地址：上海市张江高科技园区爱迪生路326号 邮编：201203

销售热线：400-820-3059

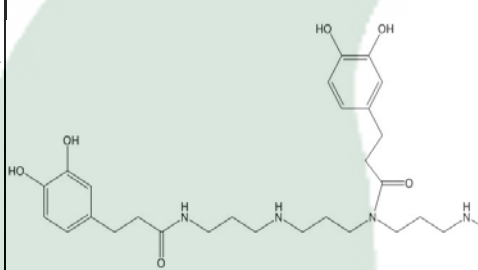
86-21-51320588-8008/8035/8026/8025

传真：86-21-51320502

QQ:800015916

URL: www.tautobiotech.com

Mail: sales2@tautobiotech.com export2@tautobiotech.com

PRODUCT ID	E-1188	Structure 
PRODUCT	Kukoamine B/地骨皮乙素	
STANDARD TYPE	Quantitative Reference Standard/ 含量测定	
LOT NUMBER	18041225	
ASSAY METHOD	HPLC,MS,NMR	
DATE OF SAMPLE	2018-04-12	
DATE OF REPORT	2018-04-12	

OTHER NAME NA
CHEMICAL FORMULA C₂₈H₄₂N₄O₆
MOLECULAR WEIGHT(MW) 530.67
CAS NUMBER 164991-67-7
CHEMICAL FAMILY Alkaloids

ANALYTICAL RESULT

TEST	METHOD	SPECIFICATION	RESULT
HPLC	Q/TFFK792—2010	NLT ≥98.0%	98.2%
NMR		Conforms	Conforms
MS		Conforms	Conforms
Residual Solvent	Q/TFFK792—2010	NA	ND
Water	Q/TFFK792—2010	≤2%	Conforms
Appearance		Brown Solid	Conforms

STORAGE CONDITIONS

STORAGE Refer to the label
SHELF LIFE 2 Years

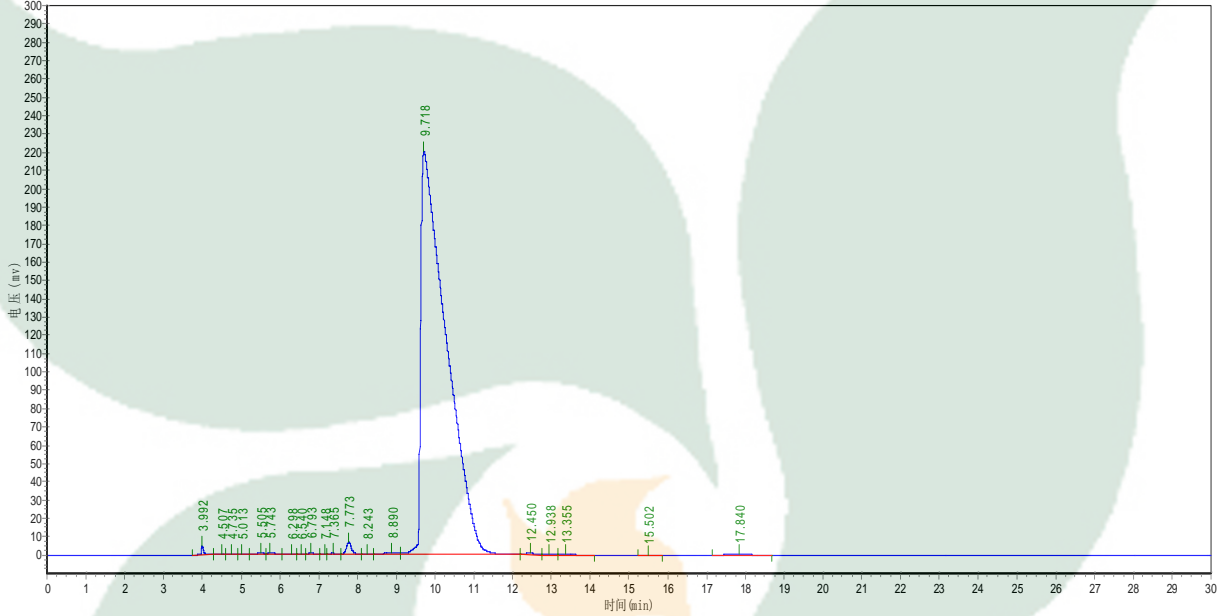
Analyst

Checker

Manager

Product Analysis Report

Product Name: Kukoamine B **Chrom-Column:** C18
Lot Number: 18041225 **Mobile Phase:** ACN:0.1%H3PO4=8:92
Temperature: 30°C **Wavelength:** 280nm
Detect Time: 2018-04-12 **Inject Vol:** 20μL
Sample dissolution: H2O **Flow:** 1ml/min



No.	Ret.Time min	Height mAU	Area mAU*min	Rel.Area %
1	3.992	4542.485	18967.900	0.1859
2	4.507	60.143	336.900	0.0033
3	4.735	282.806	1894.199	0.0186
4	5.013	112.343	797.049	0.0078
5	5.505	946.196	9561.036	0.0937
6	5.743	504.571	6728.675	0.0659
7	6.298	157.571	1469.582	0.0144
8	6.540	212.208	2008.296	0.0197
9	6.793	548.405	6692.014	0.0656
10	7.148	201.457	1831.488	0.0179
11	7.365	457.894	5642.732	0.0553
12	7.773	6530.539	63243.145	0.6198
13	8.243	235.141	3196.409	0.0313
14	8.890	702.224	18972.191	0.1859
15	9.718	220066.109	10024828.000	98.2453

16	12.450	810.477	14356.601	0.1407
17	12.938	209.966	4205.912	0.0412
18	13.355	290.027	6282.195	0.0616
19	15.502	38.877	590.600	0.0058
20	17.840	385.463	12271.707	0.1203

