



同田生物  
TAUTO BIOTECH

地址：上海市张江高科技园区爱迪生路326号 邮编：201203

销售热线：400-820-3059

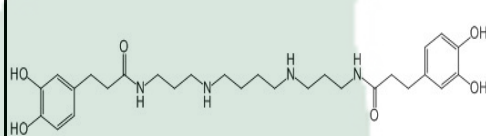
86-21-51320588-8008/8035/8026/8025

传真：86-21-51320502

QQ:800015916

URL: www.tautobiotech.com

Mail: sales2@tautobiotech.com export2@tautobiotech.com

PRODUCT ID	E-1187	<b>Structure</b> 
PRODUCT	Kukoamine A/地骨皮甲素	
STANDARD TYPE	Quantitative Reference Material (含量测定)	
LOT NUMBER	18060125	
ASSAY METHOD	HPLC,MS,NMR	
DATE OF SAMPLE	2018-06-01	
DATE OF REPORT	2018-06-01	

OTHER NAME	NA
CHEMICAL FORMULA	C <sub>28</sub> H <sub>42</sub> N <sub>4</sub> O <sub>6</sub>
MOLECULAR WEIGHT(MW)	530.666
CAS NUMBER	75288-96-9
CHEMICAL FAMILY	Alkaloids

#### ANALYTICAL RESULT

TEST	METHOD	SPECIFICATION	RESULT
HPLC	Q/TFFK265—2007	NLT ≥98.0%	98.4%
NMR		Conforms	Conforms
MS		Conforms	Conforms
Residual Solvent	Q/TFFK265—2007	NA	ND
Water	Q/TFFK265—2007	≤2%	Conforms
Appearance		Pale yellow Powder	Conforms

#### STORAGE CONDITIONS

STORAGE Refer to the label

SHELF LIFE 2 Years

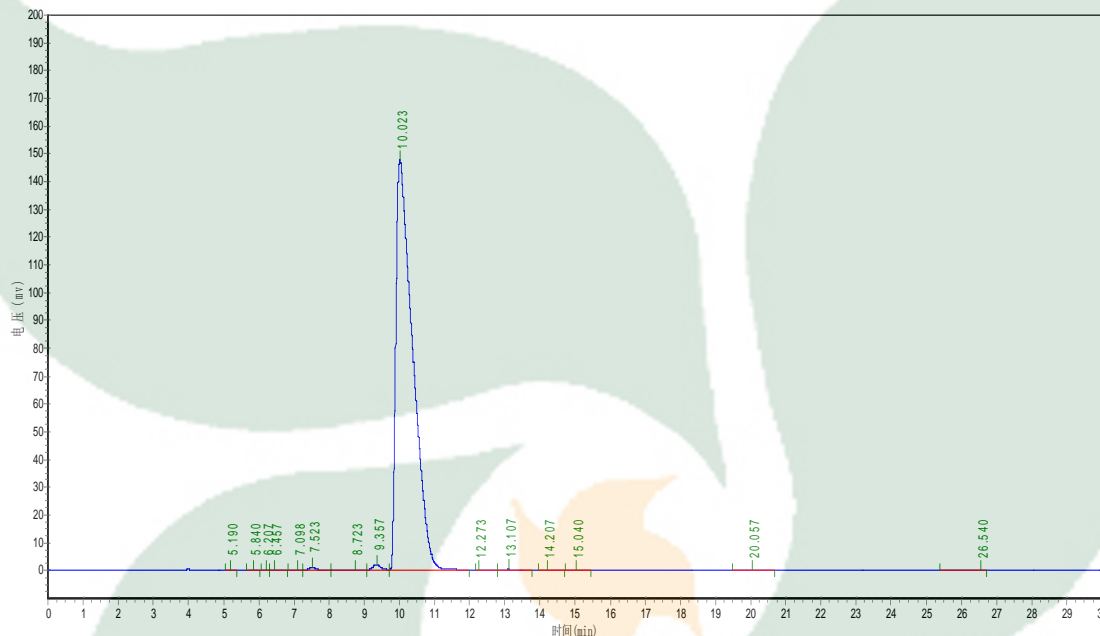
Analyst

Checker

Manager

# Product Analysis Report

**Product Name:** Kukoamine A **Chrom-Column** C18  
**Lot Number:** 18060125 **Mobile Phase:** ACN:0.1%H3PO4(8:92)  
**Detector:** UV **Wavelength:** 280nm  
**Detect Time:** 2018-06-01 **Inject Vol:** 20ul  
**Sample dissolution:** H2O **Flow:** 1.0ml/min



No.	Ret.Time min	Height mAU	Area mAU*min	Rel.Area %
1	5.190	106.897	905.750	0.0183
2	5.840	193.468	2029.850	0.0410
3	6.207	94.681	802.385	0.0162
4	6.457	241.648	3066.765	0.0619
5	7.098	149.792	1811.333	0.0366
6	7.523	957.710	15483.309	0.3126
7	8.723	203.773	8101.558	0.1635
8	9.357	1898.400	29736.600	0.6003
9	10.023	147563.406	4876540.500	98.4402
10	12.273	59.795	1367.400	0.0276
11	13.107	258.414	5695.400	0.1150
12	14.207	68.067	1411.251	0.0285
13	15.040	109.292	2455.945	0.0496
14	20.057	122.306	3688.500	0.0745
15	26.540	22.875	712.600	0.0144