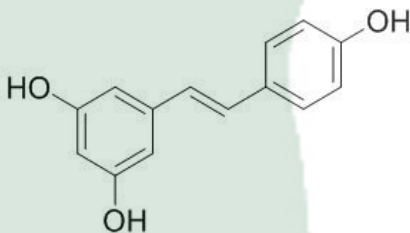


<b>PRODUCT ID</b>	E-0061	<b>Structure</b> 
<b>PRODUCT</b>	Resveratrol/白藜芦醇	
<b>STANDARD TYPE</b>	Quantitative Reference Material (含量测定)	
<b>LOT NUMBER</b>	18030631	
<b>ASSAY METHOD</b>	HPLC,NMR,MS	
<b>DATE OF SAMPLE</b>	2018-03-06	
<b>DATE OF REPORT</b>	2018-03-06	

<b>OTHER NAME</b>	NA
<b>CHEMICAL FORMULA</b>	C <sub>14</sub> H <sub>12</sub> O <sub>3</sub>
<b>MOLECULAR WEIGHT(MW)</b>	228.24328
<b>CAS NUMBER</b>	501-36-0
<b>CHEMICAL FAMILY</b>	Phenols

**ANALYTICAL RESULT**

TEST	METHOD	SPECIFICATION	RESULT
<b>HPLC</b>	Q/TFFK463—2007	NLT ≥98%	99.6%
<b>NMR</b>		Conforms	Conforms
<b>MS</b>		Conforms	Conforms
<b>Residual Solvent</b>	Q/TFFK463—2007	NA	ND
<b>Water</b>	Q/TFFK463—2007	≤2%	Conforms
<b>Appearance</b>		White Powder	Conforms

**STORAGE CONDITIONS**

 STORAGE  
 SHELF LIFE

 Refer to the label  
 2 Years

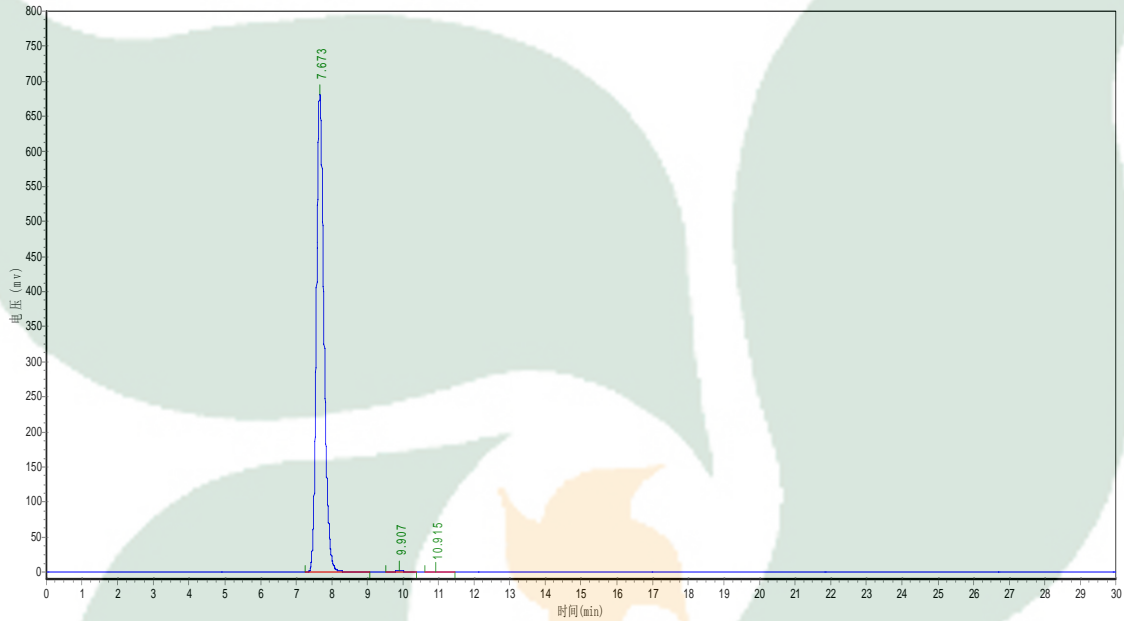
Analyst

Checker

Manager

# Product Analysis Report

Product Name: Resveratrol      Chrom-Column: C18  
Lot Number: 18030631      Mobile Phase: ACN:H2O=35:65  
Detector: UV      Wavelength: 303nm  
Detect Time: 2018-03-06      Inject Vol: 20ul  
Analyst: zhanghong      Flow: 1.0ml/min



No.	Ret.Time min	Height mAU	Area mAU*min	Rel.Area %
1	7.673	681375.688	10133177.000	99.6687
2	9.907	1694.561	30059.199	0.2957
3	10.915	170.481	3619.800	0.0356