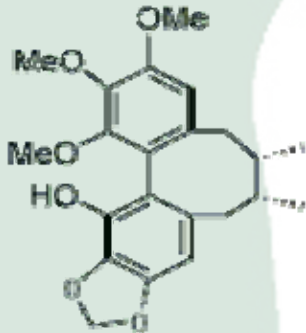


<b>PRODUCT ID</b>	E-3032	<p style="text-align: center;"><b>Structure</b></p> 
<b>PRODUCT</b>	(+)Gomisin M2/(+)戈米辛M2	
<b>STANDARD TYPE</b>	Quantitative Reference Material (含量测定)	
<b>LOT NUMBER</b>	18011025	
<b>ASSAY METHOD</b>	HPLC,MS,NMR	
<b>DATE OF SAMPLE</b>	2018-01-10	
<b>DATE OF REPORT</b>	2018-01-10	

<b>OTHER NAME</b>	NA
<b>CHEMICAL FORMULA</b>	C <sub>22</sub> H <sub>26</sub> O <sub>6</sub>
<b>MOLECULAR WEIGHT(MW)</b>	386.44
<b>CAS NUMBER</b>	NA
<b>CHEMICAL FAMILY</b>	Lignans

**ANALYTICAL RESULT**

TEST	METHOD	SPECIFICATION	RESULT
HPLC	Q/TFFK32—2005	NLT ≥98.0%	98.2%
NMR		Conforms	Conforms
MS		Conforms	Conforms
Residual Solvent	Q/TFFK32—2005	NA	ND
Water	Q/TFFK32—2005	≤2%	Conforms
Appearance		White Crystal	Conforms

**STORAGE CONDITIONS**

STORAGE	Refer to the label
SHELF LIFE	2 Years

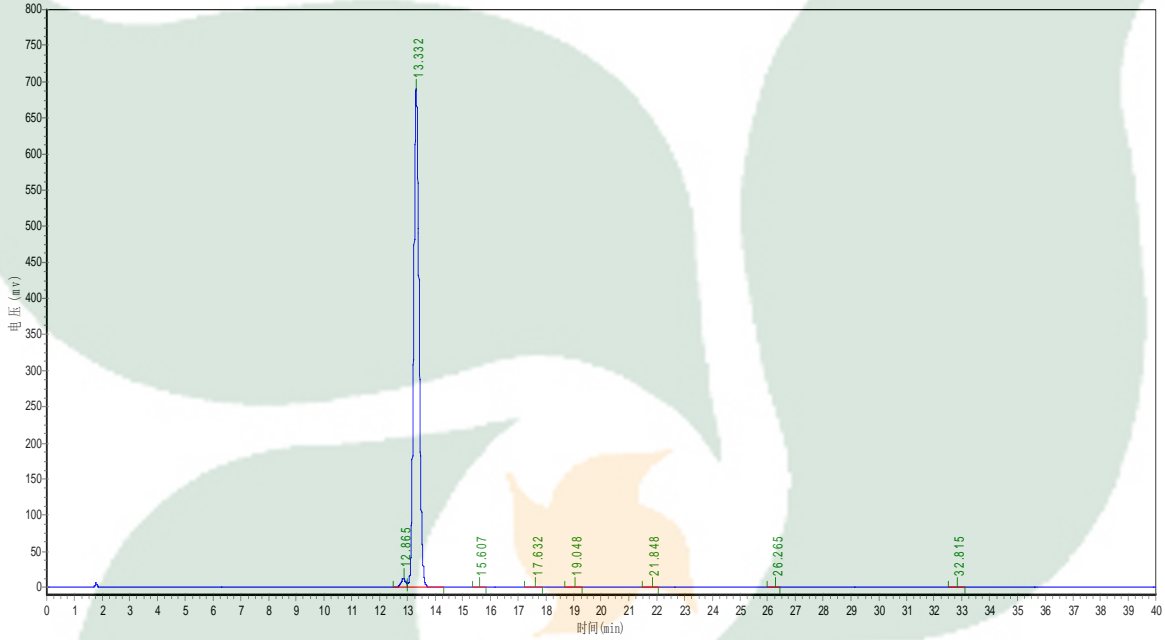
Analyst

Checker

Manager

# Product Analysis Report

**Product Name:** (+)Gomisin M2      **Chrom-Column:** Kromasil C18  
**Lot Number:** 18011025      **Mobile Phase:** ACN:H2O (60%-100%)  
**Detector:** UV      **Wavelength:** 250nm  
**Detect Time:** 2018-01-10      **Inject Vol:** 20ul  
**Sample dissolution:** MeOH      **Flow:** 1.0ml/min



No.	Ret.Time min	Height mAU	Area mAU*min	Rel.Area %
1	12.865	12729.618	163176.328	1.7161
2	13.332	690904.313	9340207.000	98.2308
3	15.607	132.414	1698.600	0.0179
4	17.632	30.615	501.300	0.0053
5	19.048	62.865	983.000	0.0103
6	21.848	37.200	457.600	0.0048
7	26.265	46.071	532.000	0.0056
8	32.815	51.000	878.700	0.0092