



同田生物
TAUTO BIOTECH

地址：上海市张江高科技园区爱迪生路326号 邮编：201203

销售热线：400-820-3059

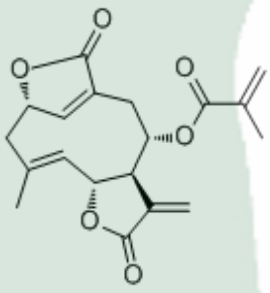
86-21-51320588-8008/8035/8026/8025

传真：86-21-51320502

QQ:800015916

URL: www.tautobiotech.com

Mail: sales2@tautobiotech.com export2@tautobiotech.com

PRODUCT ID	E-1902	Structure 
PRODUCT	Isodeoxyelephantopin /异去氧苦地胆素	
STANDARD TYPE	Quantitative Reference Standard/ 含量测定	
LOT NUMBER	17110324	
ASSAY METHOD	HPLC,NMR	
DATE OF SAMPLE	2017-11-03	
DATE OF REPORT	2017-11-03	

OTHER NAME

CHEMICAL FORMULA

C₁₉H₂₀O₆

MOLECULAR WEIGHT(MW)

344.36

CAS NUMBER

38927-54-7

CHEMICAL FAMILY

Triterpenes 三萜类

FROM

苦地胆Elephantopus scaber Linn.

ANALYTICAL RESULT

TEST	METHOD	SPECIFICATION	RESULT
HPLC	Q/TFFK76—2006	NLT ≥98.0%	Conforms
NMR		Conforms	Conforms
MS		Conforms	Conforms
Residual Solvent	Q/TFFK76—2006	NA	ND
Water	Q/TFFK76—2006	≤2%	Conforms
Appearance		White Powder	Conforms

STORAGE CONDITIONS

STORAGE

Refer to the label

SHELF LIFE

2 Years

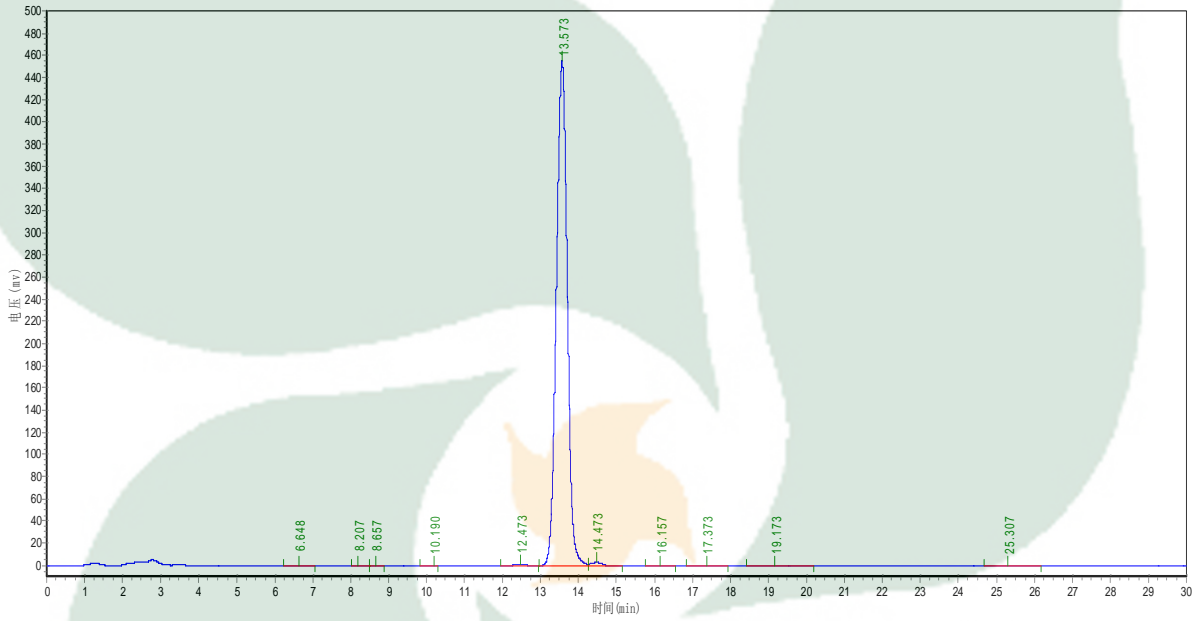
Analyst

Checker

Manager

Product Analysis Report

Product Name: Isodeoxyelephantopin **Chrom-Column:** C18
Lot Number: 17110324 **Mobile Phase:** ACN:H2O(45:55)
Temperature: 25°C **Wavelength:** 208nm
Detect Time: 2017-11-03 **Inject Vol:** 20μL
Analyst: zhanghong **Flow:** 1ml/min



No.	Ret.Time min	Height mAU	Area mAU*min	Rel.Area %
1	6.648	190.000	5071.300	0.0552
2	8.207	90.216	1056.612	0.0115
3	8.657	45.098	587.388	0.0064
4	10.190	18.444	237.900	0.0026
5	12.473	1457.679	30454.529	0.3317
6	13.573	455124.906	9068094.000	98.7743
7	14.473	2740.974	56031.859	0.6103
8	16.157	78.500	1581.300	0.0172
9	17.373	263.909	6980.400	0.0760
10	19.173	299.944	8034.600	0.0875
11	25.307	77.178	2492.200	0.0271