



同田生物
TAUTO BIOTECH

地址：上海市张江高科技园区爱迪生路326号 邮编：201203

销售热线：400-820-3059

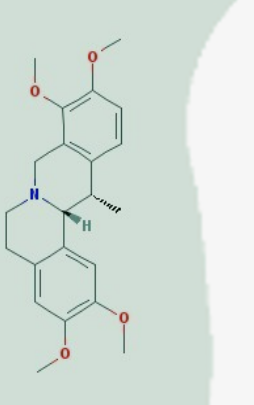
86-21-51320588-8008/8035/8026/8025

传真：86-21-51320502

QQ:800015916

URL: www.tautobiotech.com

Mail: sales2@tautobiotech.com export2@tautobiotech.com

PRODUCT ID	E-0885	Structure 
PRODUCT	Corydaline/延胡索甲素	
STANDARD TYPE	Quantitative Reference Material (含量测定)	
LOT NUMBER	17110821	
ASSAY METHOD	HPLC,MS,NMR	
DATE OF SAMPLE	2017-11-08	
DATE OF REPORT	2017-11-08	

OTHER NAME

CHEMICAL FORMULA

C₂₂H₂₇NO₄

MOLECULAR WEIGHT(MW)

369.45408

CAS NUMBER

518-69-4

CHEMICAL FAMILY

Phenols酚类

FROM

延胡索Corydalis yanhusuo W. T. Wang 的干燥块茎

ANALYTICAL RESULT

TEST	METHOD	SPECIFICATION	RESULT
HPLC	Q/TFFK731—2010	NLT ≥98.0%	Conforms
NMR		Conforms	Conforms
MS		Conforms	Conforms
Residual Solvent	Q/TFFK731—2010	NA	ND
Water	Q/TFFK731—2010	≤2%	Conforms
Appearance		Pale Yellow Powder	Conforms

STORAGE CONDITIONS

STORAGE

Refer to the label

SHELF LIFE

2 Years

Analyst

Checker

Manager

Product Analysis Report

Product Name: Corydaline

Chrom-Column: C18

Lot Number: 17110821

Mobile Phase: MeOH:0.1%H₃PO₄(PH=6.5)=45:55

Detector: UV

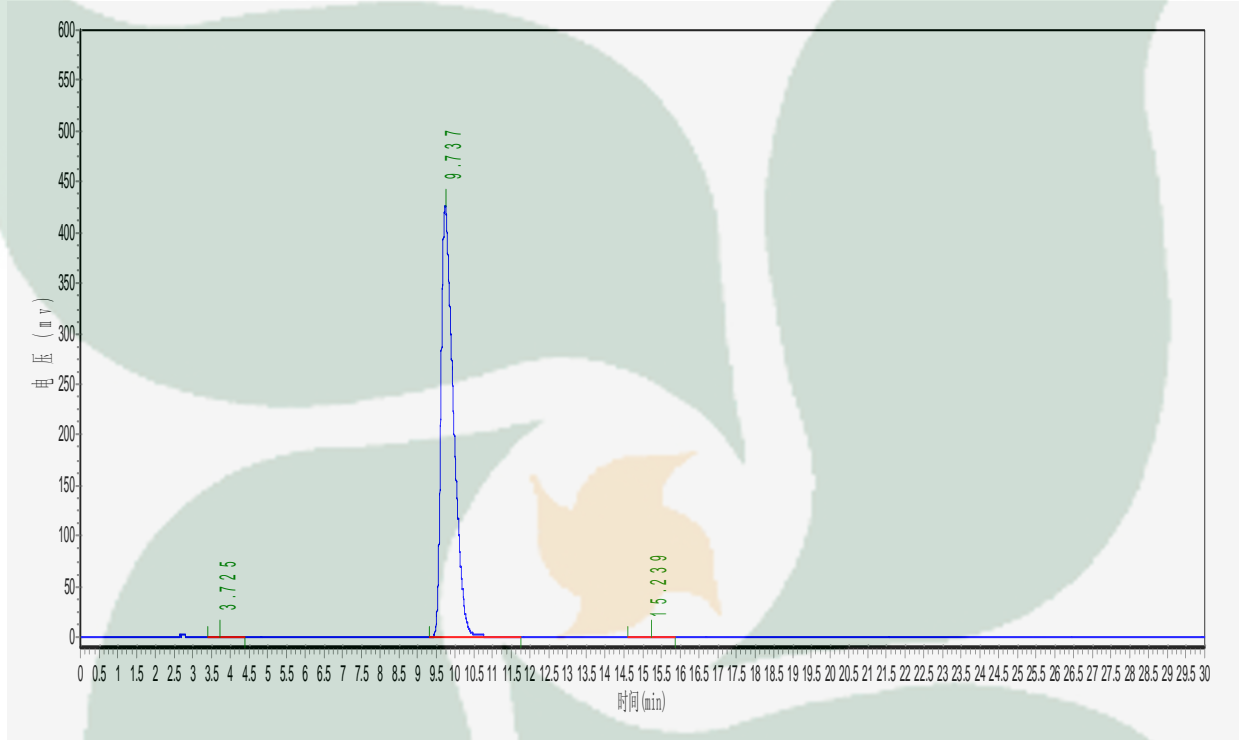
Wavelength: 280nm

Detect Time: 2017-11-08

Inject Vol: 20ul

Analyst: shuzhilin

Flow: 1.0ml/min



No.	Ret.Time min	Height mAU	Area mAU*min	Rel.Area %
1	3.725	496.291	18145.500	0.1853
2	9.737	425710.594	9752645.000	99.6182
3	15.239	599.697	19228.699	0.1964