



**同田生物**  
**TAUTO BIOTECH**

地址：上海市张江高科技园区爱迪生路326号 邮编：201203

销售热线：400-820-3059

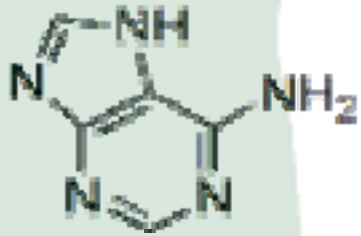
86-21-51320588-8008/8035/8026/8025

传真：86-21-51320502

QQ:800015916

URL: www.tautobiotech.com

Mail: sales2@tautobiotech.com export2@tautobiotech.com

<b>PRODUCT ID</b>	E-2803	<b>Structure</b> 
<b>PRODUCT</b>	Adenine/腺嘌呤	
<b>STANDARD TYPE</b>	Quantitative Reference Material (含量测定)	
<b>LOT NUMBER</b>	17111422	
<b>ASSAY METHOD</b>	HPLC,MS,NMR	
<b>DATE OF SAMPLE</b>	2017-11-14	
<b>DATE OF REPORT</b>	2017-11-14	

**OTHER NAME**

**CHEMICAL FORMULA**

C<sub>5</sub>H<sub>5</sub>N<sub>5</sub>

**MOLECULAR WEIGHT(MW)**

135.13

**CAS NUMBER**

73-24-5

**CHEMICAL FAMILY**

Alkaloids生物碱类

**FROM**

茶叶tea leaves

**ANALYTICAL RESULT**

TEST	METHOD	SPECIFICATION	RESULT
HPLC	Q/TFFK646—2010	NLT ≥98.0%	Conforms
NMR		Conforms	Conforms
MS		Conforms	Conforms
<b>Residual Solvent</b>	Q/TFFK646—2010	NA	ND
<b>Water</b>	Q/TFFK646—2010	≤2%	Conforms
<b>Appearance</b>		white Powder	Conforms

**STORAGE CONDITIONS**

STORAGE

Refer to the label

SHELF LIFE

2 Years

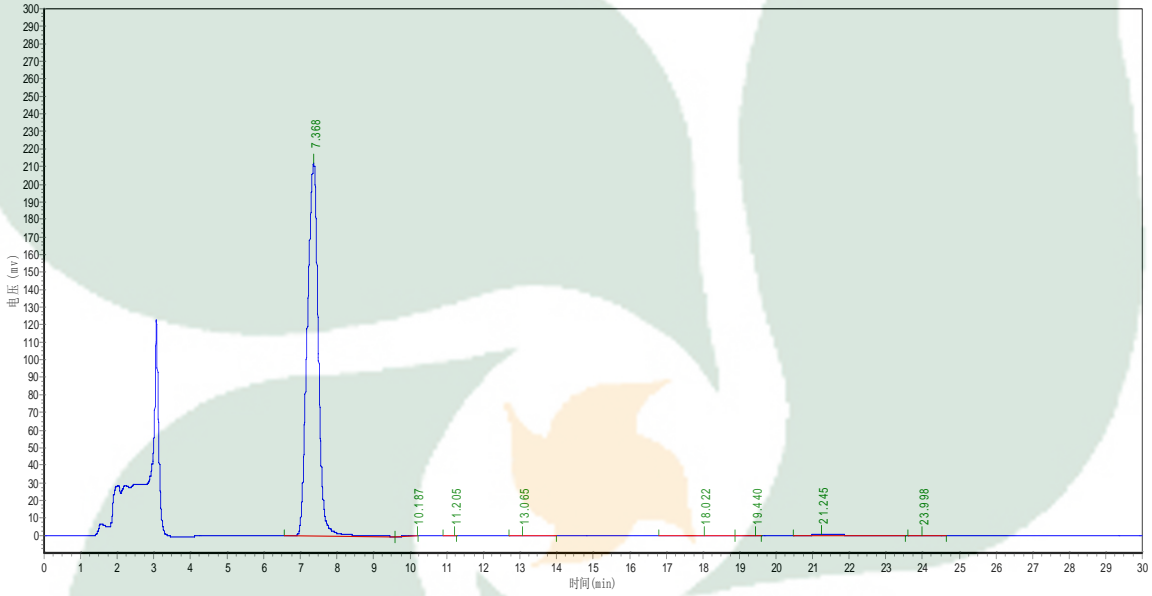
Analyst

Checker

Manager

# Product Analysis Report

**Product Name:** Adenine      **Chrom-Column:** C18  
**Lot Number:** 17111422      **Mobile Phase:** MeOH:0.1%TEA=10:90  
**Detector:** UV      **Wavelength:** 254nm  
**Detect Time:** 2017-11-14      **Inject Vol:** 20ul  
**Analyst:** zhanghong      **Flow:** 1.0ml/min



No.	Ret.Time min	Height mAU	Area mAU*min	Rel.Area %
1	7.368	212478.672	4455346.500	98.7089
2	10.187	25.024	2649.101	0.0587
3	11.205	28.405	271.729	0.0060
4	13.065	48.489	2606.974	0.0578
5	18.022	55.451	3163.702	0.0701
6	19.440	22.539	493.250	0.0109
7	21.245	627.683	47640.898	1.0555
8	23.998	43.005	1449.500	0.0321