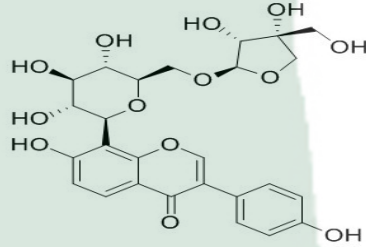


<b>PRODUCT ID</b>	E-2628	<b>Structure</b> 
<b>PRODUCT</b>	Mirificin/ 芹糖葛根素苷	
<b>STANDARD TYPE</b>	Quantitative Reference Material (含量测定)	
<b>LOT NUMBER</b>	17101024	
<b>ASSAY METHOD</b>	HPLC,MS,NMR	
<b>DATE OF SAMPLE</b>	2017-10-10	
<b>DATE OF REPORT</b>	2017-10-10	

<b>OTHER NAME</b>	葛根素芹菜糖苷
<b>CHEMICAL FORMULA</b>	C <sub>26</sub> H <sub>28</sub> O <sub>13</sub>
<b>MOLECULAR WEIGHT(MW)</b>	548.49
<b>CAS NUMBER</b>	103654-50-8
<b>CHEMICAL FAMILY</b>	Flavonoids黄酮类
<b>FROM</b>	葛 Pueraria lobata (Willd. ) Ohwi

#### ANALYTICAL RESULT

TEST	METHOD	SPECIFICATION	RESULT
HPLC	Q/TFFK108—2007	NLT ≥98.0%	Conforms
NMR		Conforms	Conforms
MS		Conforms	Conforms
Residual Solvent	Q/TFFK108—2007	NA	ND
Water	Q/TFFK108—2007	≤2%	Conforms
Appearance		White Powder	Conforms

#### STORAGE CONDITIONS

STORAGE	Refer to the label
SHELF LIFE	2 Years

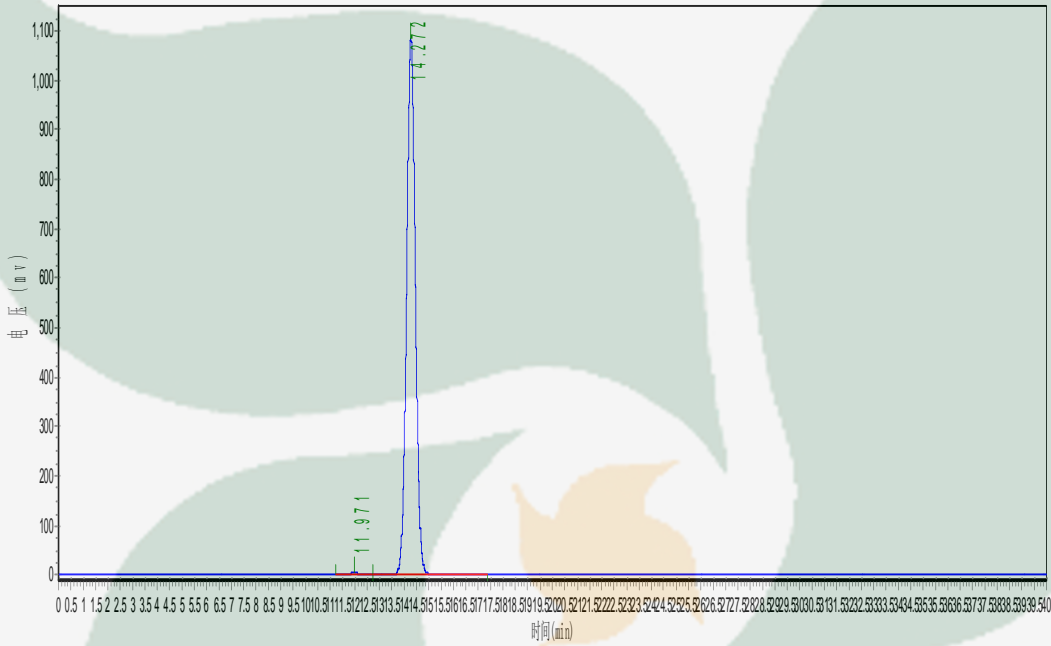
Analyst

Checker

Manager

# Product Analysis Report

Product Name: Mirificin      Chrom-Column: C18  
Lot Number: 17101024      Mobile Phase: ACN:H2O=12:88  
Detector: UV      Wavelength: 250nm  
Detect Time: 2017-10-10      Inject Vol: 20ul  
Analyst: shuzhilin      Flow: 1.0ml/min



No.	Ret.Time min	Height mAU	Area mAU*min	Rel.Area %
1	11.971	4951.200	118599.500	0.4413
2	14.272	1078882.000	26753792.000	99.5587