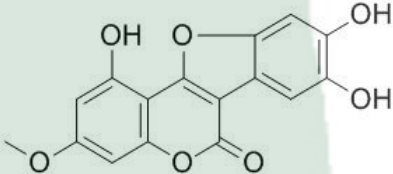


PRODUCT ID	E-0695	Structure 
PRODUCT	Wedelolactone/蟛蜞菊内酯	
STANDARD TYPE	Quantitative Reference Material (含量测定)	
LOT NUMBER	17041322	
ASSAY METHOD	HPLC,MS,NMR	
DATE OF SAMPLE	2017-04-13	
DATE OF REPORT	2017-04-13	

CHEMICAL NAME
OTHER NAME

5,11,12-Trihydroxy-7-methoxycoumestan

CHEMICAL FORMULA

 C₁₆H₁₀O₇
MOLECULAR WEIGHT(MW)

314.25

CAS NUMBER

524-12-9

CHEMICAL FAMILY

Coumarins 香豆素类

FROM

 菊科蟛蜞菊属植物蟛蜞菊 *Wedelia chinensis* (Osb.) Merr. 全草

ANALYTICAL RESULT

TEST	METHOD	SPECIFICATION	RESULT
HPLC	Q/TFFK177—2007	NLT ≥98.0%	Conforms
NMR		Conforms	Conforms
MS		Conforms	Conforms
Residual Solvent	Q/TFFK177—2007	NA	ND
Water	Q/TFFK177—2007	≤2%	Conforms
Appearance		Pale Green Powder	Conforms

STORAGE CONDITIONS

STORAGE

Refer to the label

SHELF LIFE

2 Years

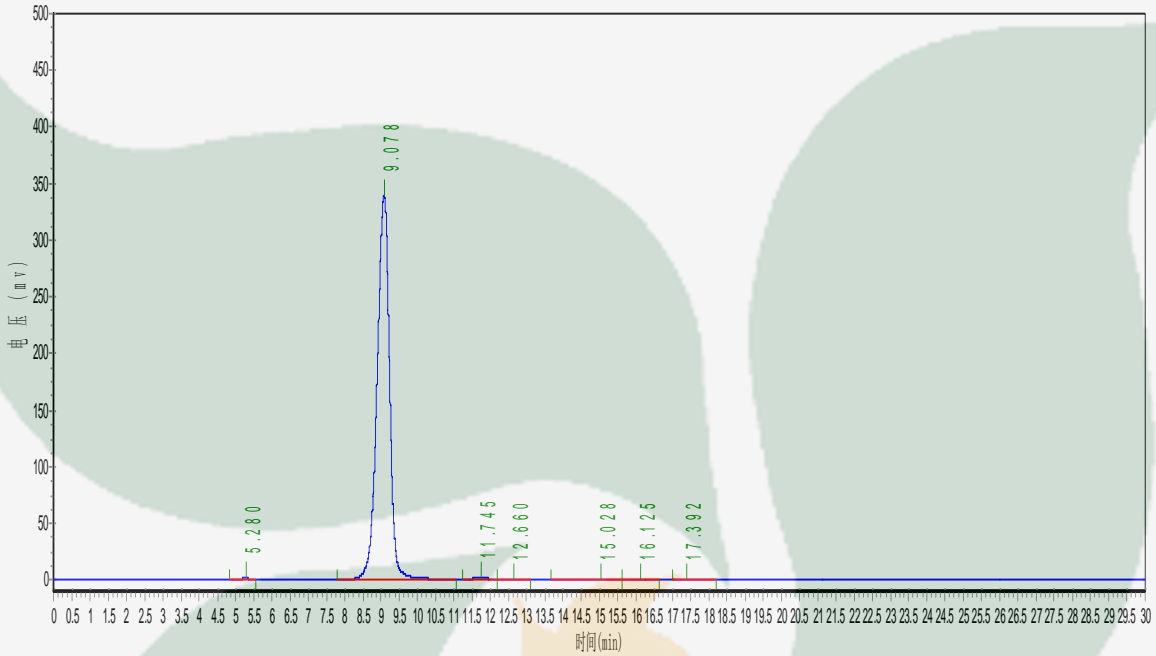
Analyst

Checker

Manager

Product Analysis Report

Product Name: Wedelolactone Chrom-Column: C18
Lot Number: 17041322 Mobile Phase: MeOH: 0.1%H3PO4=59:41
Detector: UV Wavelength: 351nm
Detect Time: 2017-04-13 Inject Vol: 20ul
Analyst: shuzhilin Flow: 1.0ml/min



No.	Ret.Time min	Height mAU	Area mAU*min	Rel.Area %
1	5.280	1361.819	22644.699	0.2747
2	9.078	339543.250	8113267.000	98.4050
3	11.745	1800.332	45559.199	0.5526
4	12.660	319.274	10875.400	0.1319
5	15.028	621.190	31519.785	0.3823
6	16.125	491.791	15039.174	0.1824
7	17.392	156.976	5865.865	0.0711