



同田生物
TAUTO BIOTECH

地址：上海市张江高科技园区爱迪生路326号 邮编：201203

销售热线：400-820-3059

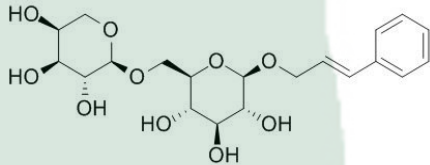
86-21-51320588-8008/8035/8026/8025

传真：86-21-51320502

QQ:800015916

URL: www.tautobiotech.com

Mail: sales2@tautobiotech.com export2@tautobiotech.com

PRODUCT ID	E-0211	Structure 
PRODUCT	Rosavin/络塞维	
STANDARD TYPE	Quantitative Reference Standard/ 含量测定	
LOT NUMBER	17101621	
ASSAY METHOD	HPLC,MS,NMR	
DATE OF SAMPLE	2017-10-16	
DATE OF REPORT	2017-10-16	

OTHER NAME

CHEMICAL FORMULA

C₂₀H₂₈O₁₀

MOLECULAR WEIGHT(MW)

428.43032

CAS NUMBER

84954-92-7

CHEMICAL FAMILY

Phenylpropanoids 苯丙素类

FROM

蔷薇红景天 *Rhodiola rosea* L.

ANALYTICAL RESULT

TEST	METHOD	SPECIFICATION	RESULT
HPLC	Q/TFFK298—2007	NLT ≥98.0%	Conforms
NMR		Conforms	Conforms
MS		Conforms	Conforms
Residual Solvent	Q/TFFK298—2007	NA	ND
Water	Q/TFFK298—2007	≤2%	Conforms
Appearance		White Powder	Conforms

STORAGE CONDITIONS

STORAGE

Refer to the label

SHELF LIFE

2 Years

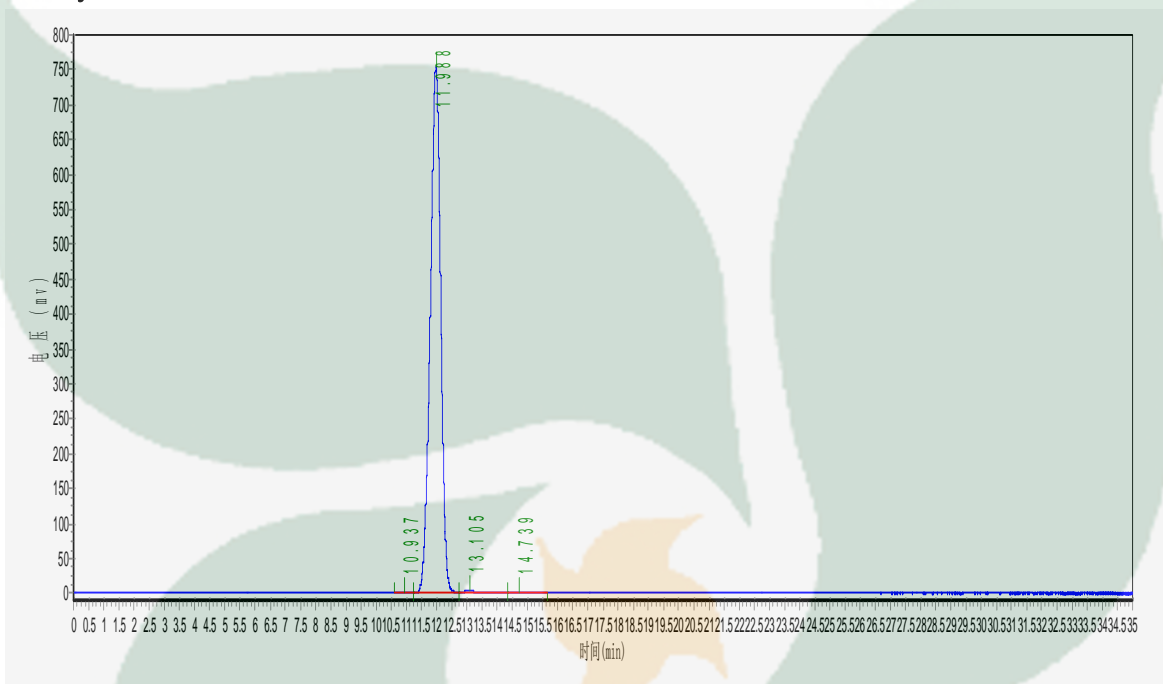
Analyst

Checker

Manager

Product Analysis Report

Product Name: Rosavin Chrom-Column: C18
Lot Number: 17101621 Mobile Phase: MeOH: H2O (40:60)
Detector: UV Wavelength: 254nm
Detect Time: 2017-10-16 Inject Vol: 20ul
Analyst: shuzhilin Flow: 1.0ml/min



No.	Name	Ret.Time min	Height mAU	Area mAU*min	Rel.Area %
1		10.937	775.088	16975.709	0.0922
2		11.988	754288.625	18283276.000	99.2485
3		13.105	3320.269	109453.609	0.5942
4		14.739	298.174	12013.241	0.0652