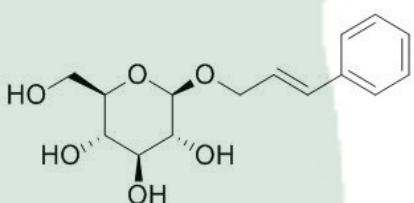


PRODUCT ID	E-0430	Structure 
PRODUCT	Rosin/洛缇	
STANDARD TYPE	Quantitative Reference Standard/ 含量测定	
LOT NUMBER	17061221	
ASSAY METHOD	HPLC,MS,NMR	
DATE OF SAMPLE	2017-06-12	
DATE OF REPORT	2017-06-12	

OTHER NAME

CHEMICAL FORMULA

C₁₅H₂₀O₆

MOLECULAR WEIGHT(MW)

296.3157

CAS NUMBER

85026-55-7

CHEMICAL FAMILY

Phenylpropanoids 苯丙素类

FROM

蔷薇红景天 *Rhodiola rosea* L.

ANALYTICAL RESULT

TEST	METHOD	SPECIFICATION	RESULT
HPLC	Q/TFFK128—2007	NLT ≥97.0%	Conforms
NMR		Conforms	Conforms
MS		Conforms	Conforms
Residual Solvent	Q/TFFK128—2007	NA	ND
Water	Q/TFFK128—2007	≤2%	Conforms
Appearance		yellow Solid	Conforms

STORAGE CONDITIONS

STORAGE

Refer to the label

SHELF LIFE

2 Years

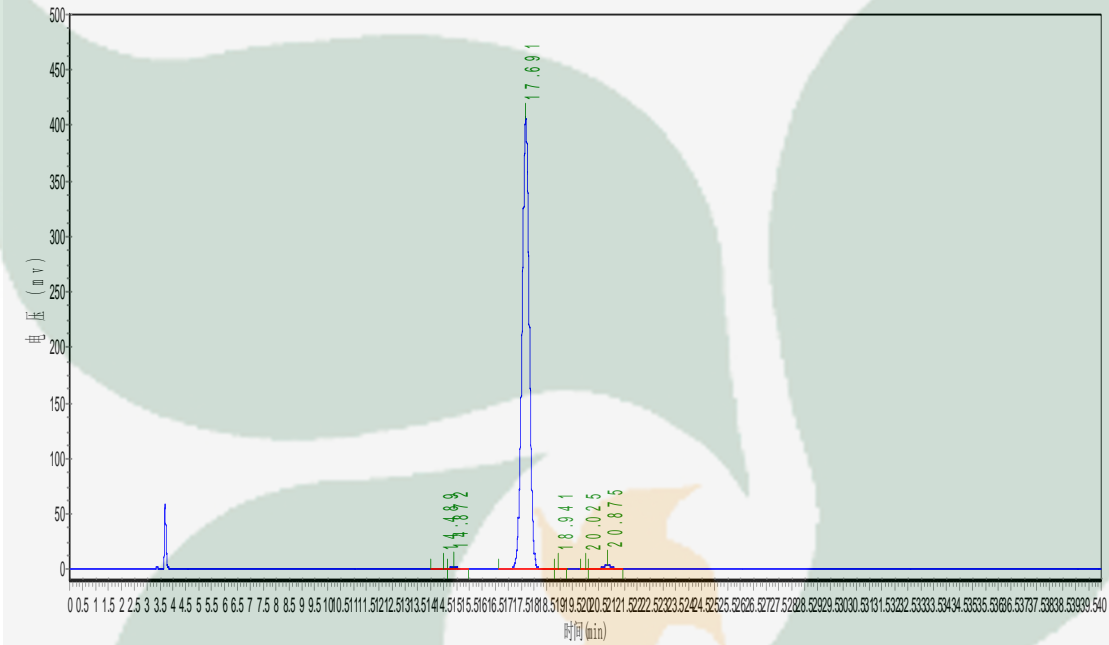
Analyst

Checker

Manager

Product Analysis Report

Product Name: Rosin Chrom-Column: C18
Lot Number: 17061221 Mobile Phase: ACN:0.1%H₃PO₄=19:81
Temperature: 25°C Wavelength: 238nm
Detect Time: 2017-06-12 Inject Vol: 20ul
Analyst: shuzhilin Flow: 1.0ml/min



No.	Ret.Time min	Height mAU	Area mAU*min	Rel.Area %
1	14.489	1205.314	20364.666	0.2477
2	14.872	1813.569	44511.504	0.5415
3	17.691	407196.906	8045104.000	97.8717
4	18.941	263.596	5751.005	0.0700
5	20.025	217.871	3414.618	0.0415
6	20.875	3608.948	100906.781	1.2276