



同田生物
TAUTO BIOTECH

地址：上海市张江高科技园区爱迪生路326号 邮编：201203

销售热线：400-820-3059

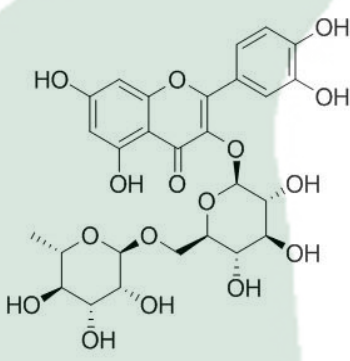
86-21-51320588-8008/8035/8026/8025

传真：86-21-51320502

QQ:800015916

URL: www.tautobiotech.com

Mail: sales2@tautobiotech.com export2@tautobiotech.com

PRODUCT ID	E-0124	Structure 
PRODUCT	Rutin /芦丁	
STANDARD TYPE	Quantitative Reference Standard/ 含量测定	
LOT NUMBER	17092921	
ASSAY METHOD	HPLC,MS,NMR	
DATE OF SAMPLE	2017-09-29	
DATE OF REPORT	2017-09-29	

OTHER NAME Rutoside

CHEMICAL FORMULA C₂₇H₃₀O₁₆

MOLECULAR WEIGHT(MW) 610.5175

CAS NUMBER 153-18-4

CHEMICAL FAMILY Flavonoids黄酮类

FROM Ruta graveolens L.

ANALYTICAL RESULT

TEST	METHOD	SPECIFICATION	RESULT
HPLC	Q/TFFK127—2007	NLT ≥96.0%	Conforms
NMR		Conforms	Conforms
MS		Conforms	Conforms
Residual Solvent	Q/TFFK127—2007	NA	ND
Water	Q/TFFK127—2007	≤2%	Conforms
Appearance		Yellow Powder	Conforms

STORAGE CONDITIONS

STORAGE Refer to the label

SHELF LIFE 2 Years

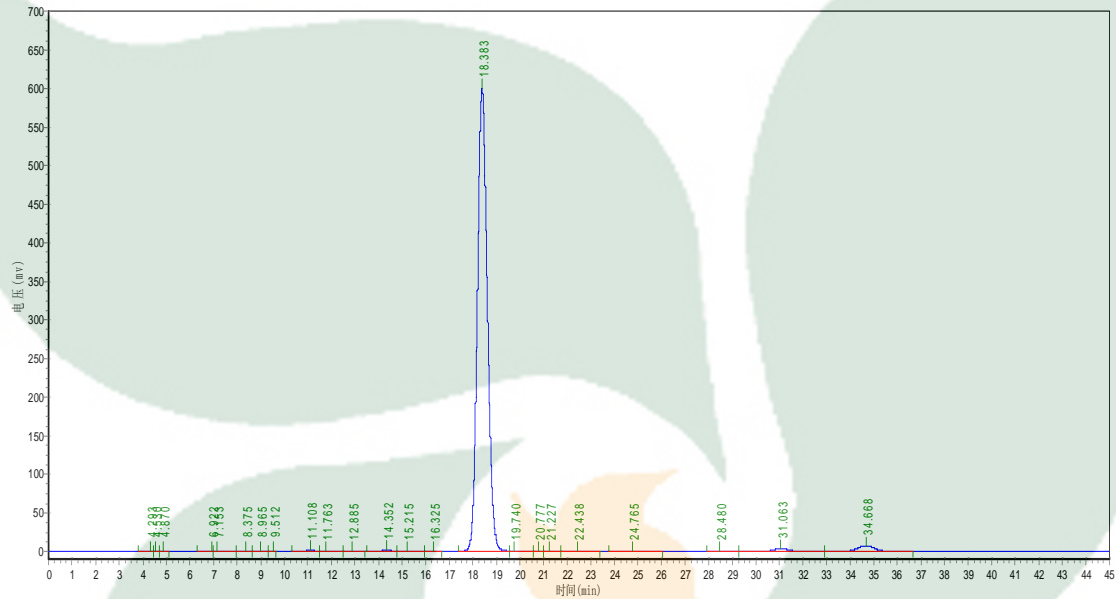
Analyst

Checker

Manager

Product Analysis Report

Product Name: Rutin Chrom-Column: Kromasil C18
Lot Number: 17092921 Mobile Phase: MeOH:0.1%H3PO4=40: 60
Detector: UV Wavelength: 254nm
Detect Time: 2017-09-29 Inject Vol: 20ul
Analyst: zhanghong Flow: 1.0ml/min



No.	Ret.Time min	Height mAU	Area mAU*min	Rel.Area %
1	4.293	506.086	8757.818	0.0477
2	4.530	685.196	6053.400	0.0330
3	4.870	303.921	2675.931	0.0146
4	6.922	196.493	3227.758	0.0176
5	7.153	458.928	8676.077	0.0473
6	8.375	178.102	3331.867	0.0182
7	8.965	226.363	4639.600	0.0253
8	9.512	67.827	1051.700	0.0057
9	11.108	2053.480	50395.742	0.2747
10	11.763	500.374	13755.265	0.0750
11	12.885	179.170	5234.518	0.0285
12	14.352	1790.472	49674.914	0.2708
13	15.215	511.356	24762.371	0.1350
14	16.325	490.206	16590.074	0.0904
15	18.383	599913.375	17566548.000	95.7569
16	19.740	938.355	33013.504	0.1800
17	20.777	226.547	6070.167	0.0331
18	21.227	264.457	9190.017	0.0501

19	22.438	264.834	14209.032	0.0775
20	24.765	266.999	13522.840	0.0737
21	28.480	42.589	1314.950	0.0072
22	31.063	3242.176	155625.016	0.8483
23	34.668	6813.541	346628.594	1.8895

