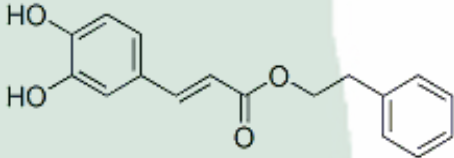


<b>PRODUCT ID</b>	E-2637	<b>Structure</b> 
<b>PRODUCT</b>	Caffeic acid phenethyl ester/咖啡酸苯乙酯	
<b>STANDARD TYPE</b>	Quantitative Reference Material (含量测定)	
<b>LOT NUMBER</b>	17042526	
<b>ASSAY METHOD</b>	HPLC,MS,NMR	
<b>DATE OF SAMPLE</b>	2017-04-25	
<b>DATE OF REPORT</b>	2017-04-25	

**CHEMICAL NAME** 2-phenylethyl 3-(3,4-dihydroxyphenyl)-2-propenoate; 2-phenylethyl 3-(3,4-dihydroxyphenyl)prop-2-enoate; 2-phenylethyl (2E)-3-(3,4-dihydroxyphenyl)prop-2-enoate;

**OTHER NAME** phenethyl caffeate; Caffeic acid phenethyl ester

**CHEMICAL FORMULA** C<sub>17</sub>H<sub>16</sub>O<sub>4</sub>

**MOLECULAR WEIGHT(MW)** 284.31

**CAS NUMBER** 104594-70-9

**CHEMICAL FAMILY** Phenylpropanoids 苯丙素类

**FROM**

#### ANALYTICAL RESULT

TEST	METHOD	SPECIFICATION	RESULT
HPLC	Q/TFFK324—2004	NLT ≥98.0%	Conforms
NMR		Conforms	Conforms
MS		Conforms	Conforms
Residual Solvent	Q/TFFK324—2004	NA	ND
Water	Q/TFFK324—2004	≤2%	Conforms
Appearance		Pale Yellow Powder	Conforms

#### STORAGE CONDITIONS

STORAGE Refer to the label

SHELF LIFE 2 Years

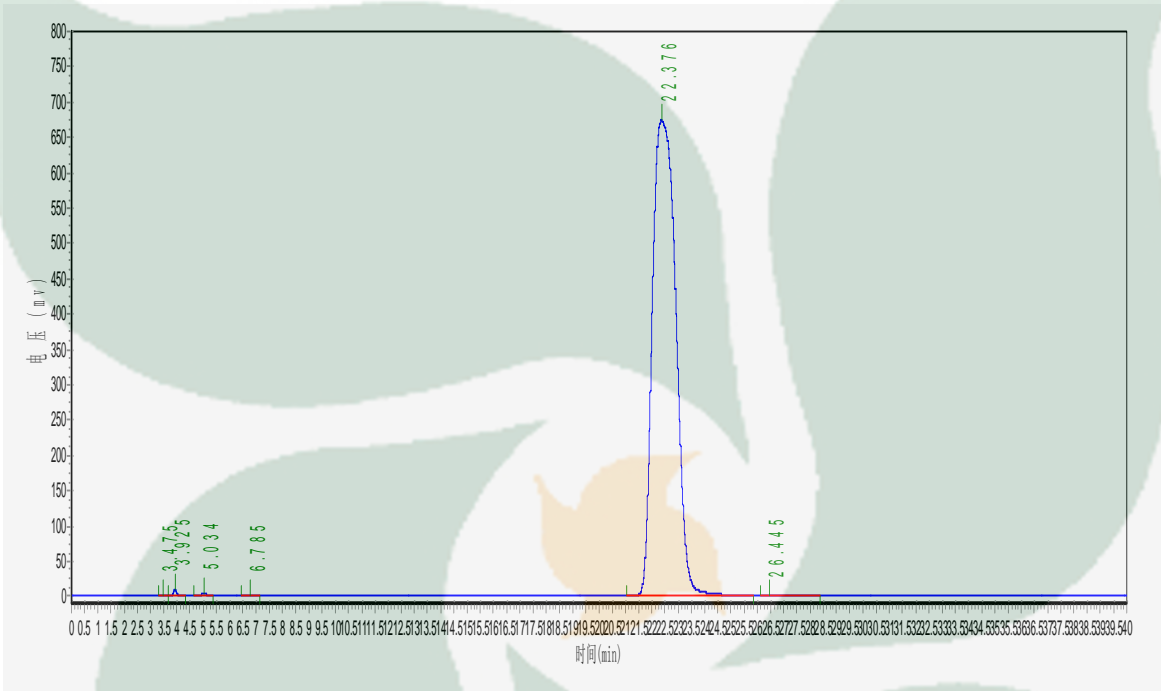
Analyst

Checker

Manager

# Product Analysis Report

**Product Name:** Caffeic acid phenethyl ester      **Chrom-Column:** C18  
**Lot Number:** 17042526      **Mobile Phase:** MeOH:0.1%H3PO4=60:40  
**Detector:** UV      **Wavelength:** 329nm  
**Detect Time:** 2017-04-25      **Inject Vol:** 20ul  
**Analyst:** shuzhilin      **Flow:** 1.0ml/min



No.	Ret.Time min	Height mAU	Area mAU*min	Rel.Area %
1	3.475	708.000	6324.700	0.0152
2	3.925	8191.156	82052.000	0.1975
3	5.034	3876.118	51739.602	0.1245
4	6.785	1126.395	18612.699	0.0448
5	22.376	674341.563	41376292.000	99.5947
6	26.445	175.559	9640.600	0.0232