



同田生物
TAUTO BIOTECH

地址：上海市张江高科技园区爱迪生路326号 邮编：201203

销售热线：400-820-3059

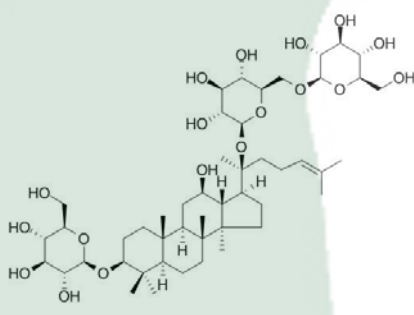
86-21-51320588-8008/8035/8026/8025

传真：86-21-51320502

QQ:800015916

URL: www.tautobiotech.com

Mail: sales2@tautobiotech.com export2@tautobiotech.com

PRODUCT ID	E-1085	Structure 
PRODUCT	Gypenoside XVII/绞股蓝皂苷XVII	
STANDARD TYPE	Quantitative Reference Material (含量测定)	
LOT NUMBER	17081825	
ASSAY METHOD	HPLC,MS,NMR	
DATE OF SAMPLE	2017-08-18	
DATE OF REPORT	2017-08-18	

OTHER NAME Gynosaponin S

CHEMICAL FORMULA C₄₈H₈₂O₁₈

MOLECULAR WEIGHT(MW) 947.16

CAS NUMBER 80321-69-3

CHEMICAL FAMILY Triterpenoids 三萜类

FROM 绞股蓝 Gynostemma pentaphyllum and Panax spp.

ANALYTICAL RESULT

TEST	METHOD	SPECIFICATION	RESULT
HPLC	Q/TFFK703—2010	NLT ≥98.0%	Conforms
NMR		Conforms	Conforms
MS		Conforms	Conforms
Residual Solvent	Q/TFFK703—2010	NA	ND
Water	Q/TFFK703—2010	≤2%	Conforms
Appearance		White Powder	Conforms

STORAGE CONDITIONS

STORAGE Refer to the label

SHELF LIFE 2 Years

Analyst

Checker

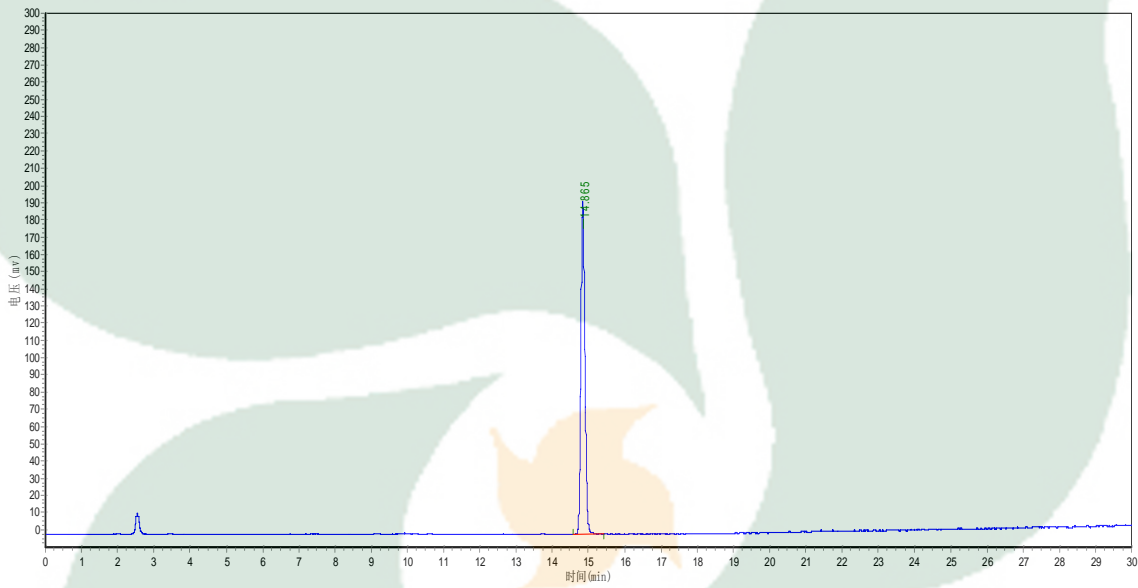
Manager

Product Analysis Report

Product Name: Gypenoside XVII Chrom-Column: Kromasil C18

Lot Number: 17081825 Mobile Phase: ACN:0.1%HAc (grads 28%-72%)

Detect Time: 2017-8-18 Detector: ELSD
Inject Vol: 20 μ L Tube Temp: 105 $^{\circ}$ C
Flow: 1.0ml/min Gas Flow: 2.5 L/min
Analyst: zhanghong Impactor: Off



No.	Ret.Time min	Height mAU	Area mAU*min	Rel.Area %
1	14.865	189189.750	1509434.125	100.0000