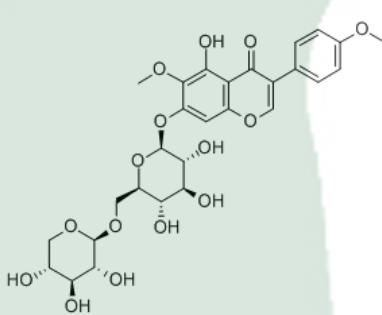


PRODUCT ID	E-2416	<p>Structure</p> 
PRODUCT	Kakkalide/葛花苷	
STANDARD TYPE	Quantitative Reference Material (含量测定)	
LOT NUMBER	17101322	
ASSAY METHOD	HPLC,MS,NMR	
DATE OF SAMPLE	2017-10-13	
DATE OF REPORT	2017-10-13	

OTHER NAME

CHEMICAL FORMULA

C₂₈H₃₂O₁₅

MOLECULAR WEIGHT(MW)

608.546

CAS NUMBER

58274-56-9

CHEMICAL FAMILY

Flavonoids黄酮类

FROM

豆科植物野葛 *Pueraria lobata* (Willd.) Ohwi 或甘葛藤 *Pueraria thomsonii* Benth. 的花。

ANALYTICAL RESULT

TEST	METHOD	SPECIFICATION	RESULT
HPLC	Q/TFFK108—2007	NLT ≥98.0%	Conforms
NMR		Conforms	Conforms
MS		Conforms	Conforms
Residual Solvent	Q/TFFK108—2007	NA	ND
Water	Q/TFFK108—2007	≤2%	Conforms
Appearance		White Powder	Conforms

STORAGE CONDITIONS

STORAGE

Refer to the label

SHELF LIFE

2 Years

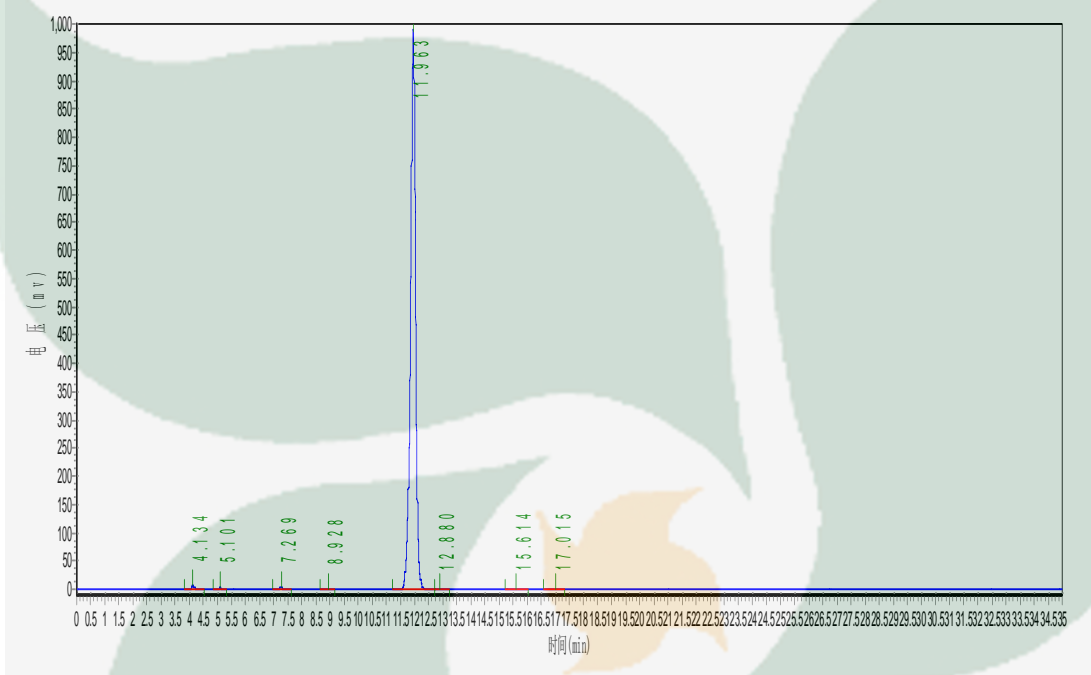
Analyst

Checker

Manager

Product Analysis Report

Product Name: Kakkalide Chrom-Column: C18
 Lot Number: 17101322 Mobile Phase: ACN:0.1%H3PO4 (grads)
 Detector: UV Wavelength: 265nm
 Detect Time: 2017-10-13 Inject Vol: 20ul
 Analyst: shuzhilin Flow: 1.0ml/min



No.	Ret.Time min	Height mAU	Area mAU*min	Rel.Area %
1	4.134	7060.350	52406.699	0.4272
2	5.101	2070.169	17069.850	0.1391
3	7.269	2536.846	25398.400	0.2070
4	8.928	914.571	9645.400	0.0786
5	11.963	987912.938	12142946.000	98.9808
6	12.880	478.464	6272.281	0.0511
7	15.614	615.500	7955.800	0.0649
8	17.015	374.909	6282.900	0.0512

	grads	
Time/min	0	35
ACN	25	50
0.1%H3PO4	75	50