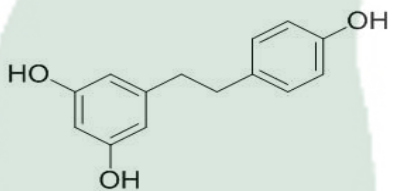


<b>PRODUCT ID</b>	E-2925	<b>Structure</b> 
<b>PRODUCT</b>	Dihydroresveratrol/二氢白藜芦醇	
<b>STANDARD TYPE</b>	Quantitative Reference Material (含量测定)	
<b>LOT NUMBER</b>	17111424	
<b>ASSAY METHOD</b>	HPLC,MS,NMR	
<b>DATE OF SAMPLE</b>	2017-11-14	
<b>DATE OF REPORT</b>	2017-11-14	

<b>OTHER NAME</b>	二氢藜芦醇
<b>CHEMICAL FORMULA</b>	C <sub>14</sub> H <sub>14</sub> O <sub>3</sub>
<b>MOLECULAR WEIGHT(M)</b>	230.3
<b>CAS NUMBER</b>	58436-28-5
<b>CHEMICAL FAMILY</b>	Phenols酚类
<b>FROM</b>	铁皮石斛Dendrobium officinale Kimura et Migo

**ANALYTICAL RESULT**

TEST	METHOD	SPECIFICATION	RESULT
HPLC	Q/TFFK199—2007	NLT ≥98.0%	Conforms
NMR		Conforms	Conforms
MS		Conforms	Conforms
Residual Solvent	Q/TFFK199—2007	NA	ND
Water	Q/TFFK199—2007	≤2%	Conforms
Appearance		White Powder	Conforms

**STORAGE CONDITIONS**

STORAGE Refer to the label

SHELF LIFE 2 Years

Analyst

Checker

Manager

# Product Analysis Report

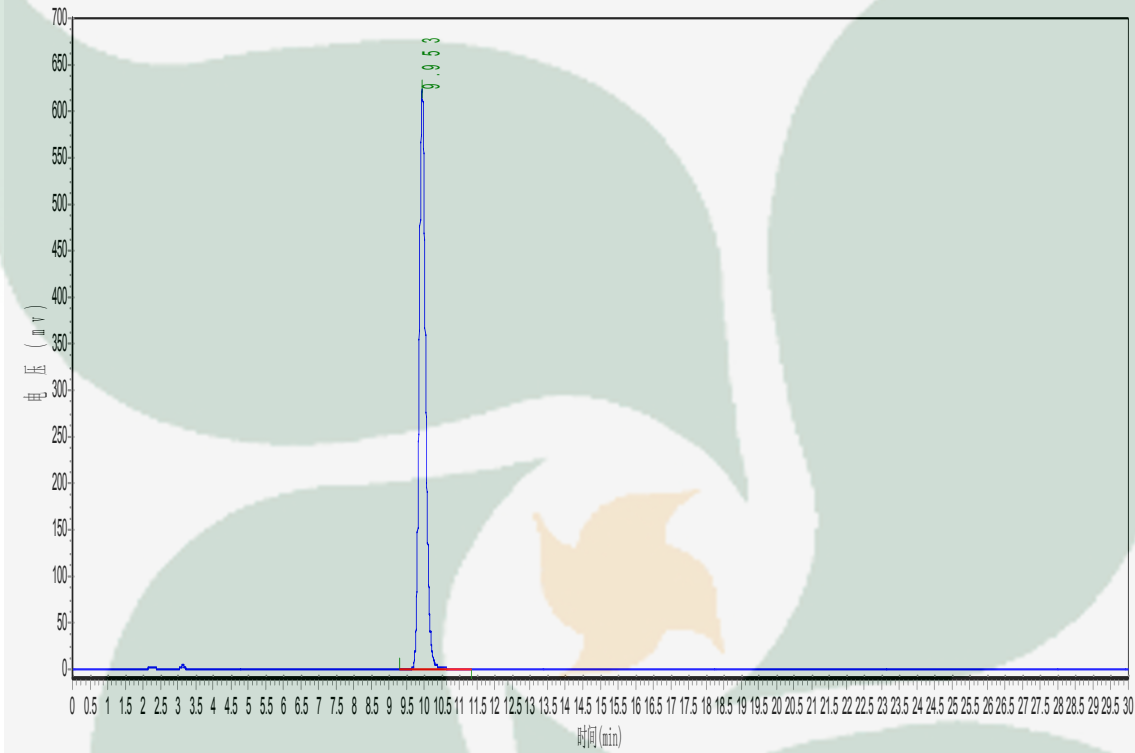
Product Name: Dihydroresveratro Chrom-Column: C18

Lot Number: 17111424 Mobile Phase: ACN:H2O=30:70

Temperature: 25°C Wavelength: 220nm

Detect Time: 2017-11-14 Inject Vol: 20µL

Analyst: shuzhilin Flow: 1ml/min



No.	Ret.Time min	Height mAU	Area mAU*min	Rel.Area %
1	9.953	620665.438	8027351.000	100.0000