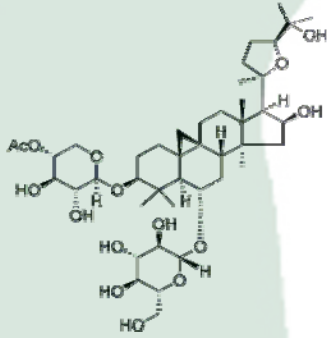


|                       |  |   |
|-----------------------|--|---|
| <b>PRODUCT ID</b>     | E-2904                                 | <p><b>Structure</b></p>  |
| <b>PRODUCT</b>        | Cyclocephaloside II                    |   |
| <b>STANDARD TYPE</b>  | Quantitative Reference Material (含量测定) |   |
| <b>LOT NUMBER</b>     | 17071922                               |   |
| <b>ASSAY METHOD</b>   | HPLC,MS,NMR                            |   |
| <b>DATE OF SAMPLE</b> | 2017-07-19                             |   |
| <b>DATE OF REPORT</b> | 2017-07-19                             |   |

**OTHER NAME**

**CHEMICAL FORMULA** C43H70O15

**MOLECULAR WEIGHT(MW)** 827.01

**CAS NUMBER** 215776-78-6

**CHEMICAL FAMILY** Steroids甾体类

**FROM** 蒙古黄芪Astragalus membranaceus ( Fish ) Bungevar. Mongholicus (Bunge)Hsiao

**ANALYTICAL RESULT**

| TEST             | METHOD         | SPECIFICATION | RESULT   |
|------------------|----------------|---------------|----------|
| HPLC             | Q/TFFK264—2007 | NLT ≥98.0%    | Conforms |
| NMR              |                | Conforms      | Conforms |
| MS               |                | Conforms      | Conforms |
| Residual Solvent | Q/TFFK264—2007 | NA            | ND       |
| Water            | Q/TFFK264—2007 | ≤2%           | Conforms |
| Appearance       |                | White Powder  | Conforms |

**STORAGE CONDITIONS**

STORAGE Refer to the label

SHELF LIFE 2 Years

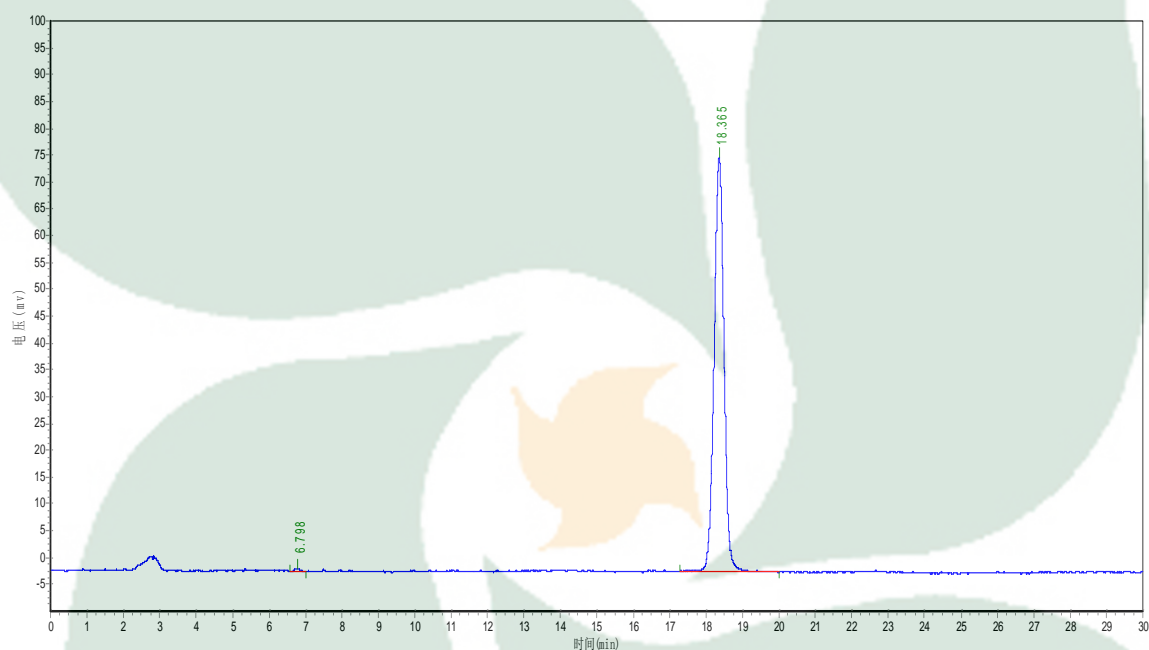
Analyst

Checker

Manager

# Product Analysis Report

**Product Name:** Cyclocephaloside II    **Chrom-Column:** C18  
**Lot Number:** 17071922    **Mobile Phase:** ACN:H2O=40:60  
**Detect Time:** 2017-7-19    **Detector:** ELSD  
**Inject Vol:** 20 $\mu$ L    **Tube Temp:** 105 $^{\circ}$ C  
**Flow:** 1.0ml/min    **Gas Flow:** 2.5 L/min  
**Analyst:** zhanghong    **Impactor:** Off



| No. | Ret.Time<br>min | Height<br>mAU | Area<br>mAU*min | Rel.Area<br>% |
|-----|-----------------|---------------|-----------------|---------------|
| 1   | 6.798           | 497.195       | 4201.601        | 0.2891        |
| 2   | 18.365          | 77201.570     | 1449134.625     | 99.7109       |