



同田生物
TAUTO BIOTECH

地址：上海市张江高科技园区爱迪生路326号 邮编：201203

销售热线：400-820-3059

86-21-51320588-8008/8035/8026/8025

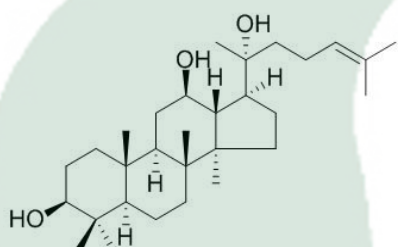
传真：86-21-51320502

QQ:800015916

URL: www.tautobiotech.com

Mail: sales2@tautobiotech.com

export2@tautobiotech.com

PRODUCT ID	E-0964	<p align="center">Structure</p> 
PRODUCT	20(R)-Protopanaxdiol/20(R)-原人参二醇	
STANDARD TYPE	Qualitative Analysis/鉴别	
LOT NUMBER	17060121	
ASSAY METHOD	HPLC,MS,NMR	
DATE OF SAMPLE	2017-06-01	
DATE OF REPORT	2017-06-01	

CHEMICAL NAME

OTHER NAME

CHEMICAL FORMULA

C₃₀H₅₂O₃

MOLECULAR WEIGHT(MV)

460

CAS NUMBER

7755-01-3

CHEMICAL FAMILY

Triterpenoids 三萜类

FROM

五加科植物人参Panax ginseng C. A. Mey.的干燥根

ANALYTICAL RESULT

TEST	METHOD	PECIFICATIO	RESULT
HPLC	Q/TFFK41—2006	NLT ≥93.0%	Conforms
NMR		Conforms	Conforms
MS		Conforms	Conforms
Residual Solvent	Q/TFFK41—2006	NA	ND
Water	Q/TFFK41—2006	≤2%	Conforms
Appearance		white powder	Conforms

STORAGE CONDITIONS

STORAGE

Refer to the label

SHELF LIFE

2 Years

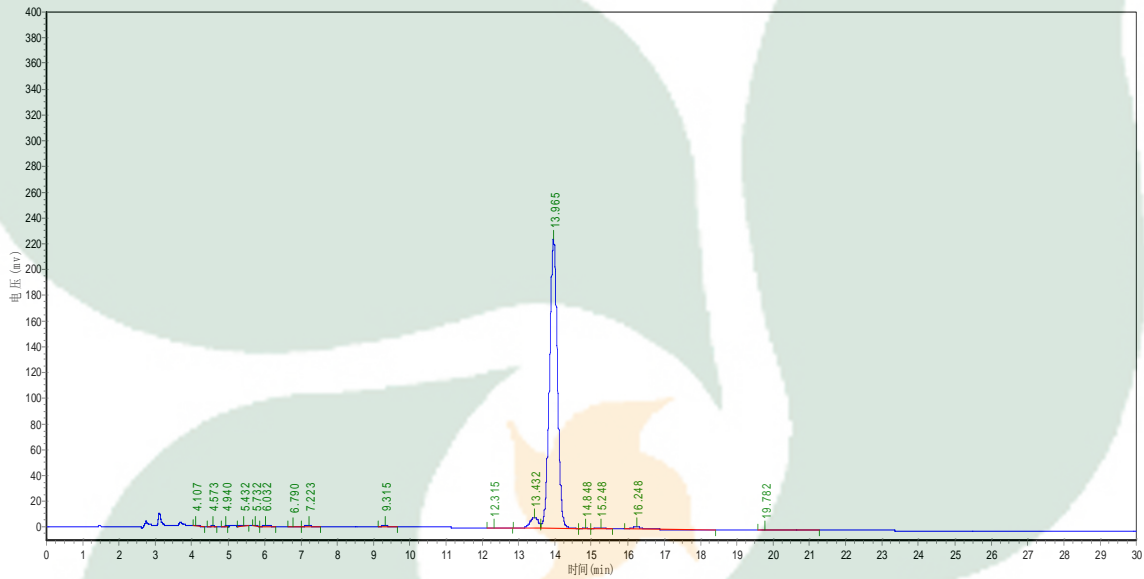
Analyst

Checker

Manager

Product Analysis Report

Product Name: 20(R)-Protopanaxdiol Chrom-Column: C18
Lot Number: 17060121 Mobile Phase: ACN:H2O=90:10
Detector: UV Wavelength: 203nm
Detect Time: 2017-06-01 Inject Vol: 20ul
Analyst: zhanghong Flow: 1.0ml/min



No.	Ret.Time min	Height mAU	Area mAU*min	Rel.Area %
1	4.107	500.154	2224.350	0.0615
2	4.573	108.065	702.400	0.0194
3	4.940	39.667	293.250	0.0081
4	5.432	499.222	3606.772	0.0998
5	5.732	254.667	1300.900	0.0360
6	6.032	209.176	2473.200	0.0684
7	6.790	67.644	831.350	0.0230
8	7.223	325.778	3622.150	0.1002
9	9.315	876.746	8553.100	0.2366
10	12.315	165.839	1786.100	0.0494
11	13.432	8287.297	132964.563	3.6778
12	13.965	224420.969	3409845.000	94.3168
13	14.848	198.373	2871.267	0.0794
14	15.248	994.630	15369.182	0.4251
15	16.248	1897.867	25685.801	0.7105
16	19.782	54.644	3182.400	0.0880