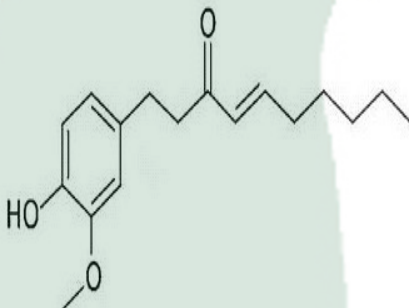


<b>PRODUCT ID</b>	E-0641	<b>Structure</b> 
<b>PRODUCT</b>	6-Shogaol/6-姜烯酚	
<b>STANDARD TYPE</b>	Quantitative Reference Material (含量测定)	
<b>LOT NUMBER</b>	17062922	
<b>ASSAY METHOD</b>	HPLC,MS,NMR	
<b>DATE OF SAMPLE</b>	2017-06-29	
<b>DATE OF REPORT</b>	2017-06-29	

**CHEMICAL FORMULA**

 C<sub>17</sub>H<sub>24</sub>O<sub>3</sub>
**MOLECULAR WEIGHT(MW)**

276.37

**CAS NUMBER**

555-66-8

**CHEMICAL FAMILY**

Phenols 酚类

**FROM**

Zingiber officinale Rosc Zingiber officinale Rosc

**ANALYTICAL RESULT**

TEST	METHOD	SPECIFICATION	RESULT
<b>HPLC</b>	Q/TFFK724-2010	NLT ≥98.0%	Conforms
<b>NMR</b>		Conforms	Conforms
<b>MS</b>		Conforms	Conforms
<b>Residual Solvent</b>	Q/TFFK724-2010	NA	ND
<b>Water</b>	Q/TFFK724-2010	≤2%	Conforms
<b>Appearance</b>		yellow liquid	Conforms

**STORAGE CONDITIONS**
**STORAGE**

Refer to the label

**SHELF LIFE**

2 Years

**Analyst**
**Checker**
**Manager**

# Product Analysis Report

Product Name: 6-Shogaol

Chrom-Colour C18

Lot Number: 17062922

Mobile Phase MeOH:H2O (75:25)

Detector: UV

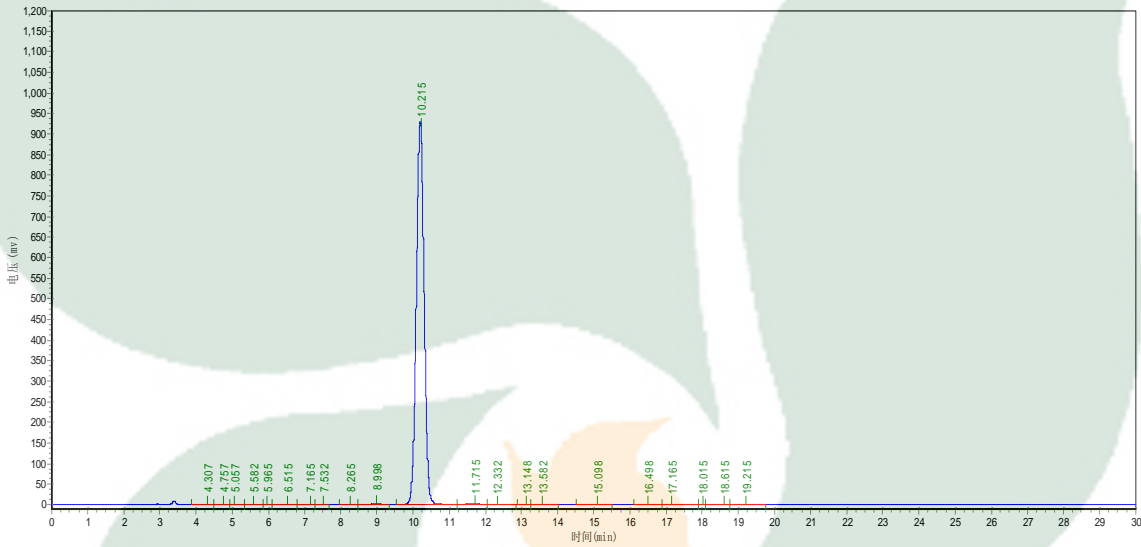
Wavelength: 280nm

Detect Time: 2017-06-29

Inject Vol: 20ul

Analyst: zhanghong

Flow: 1.0ml/min



No.	Ret.Time min	Height mAU	Area mAU*min	Rel.Area %
1	4.307	354.517	4402.644	0.0312
2	4.757	1159.119	12660.814	0.0898
3	5.057	194.188	3177.009	0.0225
4	5.582	939.557	11060.973	0.0784
5	5.965	126.477	1487.894	0.0105
6	6.515	960.102	13051.833	0.0925
7	7.165	42.379	637.800	0.0045
8	7.532	61.250	616.800	0.0044
9	8.265	315.268	5678.134	0.0403
10	8.998	3073.146	52142.867	0.3697
11	10.215	92540.688	13882667.000	98.4281
12	11.715	2022.231	55480.695	0.3934
13	12.332	820.899	16673.787	0.1182
14	13.148	53.235	718.559	0.0051
15	13.582	837.118	14650.541	0.1039
16	15.098	244.934	5711.900	0.0405
17	16.498	701.280	14598.728	0.1035
18	17.165	172.748	4778.872	0.0339
19	18.015	14.273	74.100	0.0005
20	18.615	46.760	1065.260	0.0076
21	19.215	107.240	3035.840	0.0215