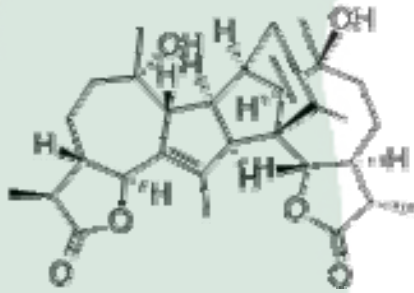


<b>PRODUCT ID</b>	E-2548	<b>Structure</b> 
<b>PRODUCT</b>	Absinthin/洋艾素	
<b>STANDARD TYPE</b>	Quantitative Reference Material (含量测定)	
<b>LOT NUMBER</b>	16121322	
<b>ASSAY METHOD</b>	HPLC,MS,NMR	
<b>DATE OF SAMPLE</b>	2016-12-13	
<b>DATE OF REPORT</b>	2016-12-13	

**CHEMICAL NAME**

**OTHER NAME**

艾苦素

**CHEMICAL FORMULA**

C<sub>30</sub>H<sub>40</sub>O<sub>6</sub>

**MOLECULAR WEIGHT(MW)**

496.635

**CAS NUMBER**

1362-42-1

**CHEMICAL FAMILY**

Triterpenoid三萜类

**FROM**

菊科植物洋艾 *Artemisia absinthum* L. 地上部分

**ANALYTICAL RESULT**

TEST	METHOD	SPECIFICATION	RESULT
HPLC	Q/TFFK71—2006	NLT ≥98.0%	Conforms
NMR		Conforms	Conforms
MS		Conforms	Conforms
Residual Solvent	Q/TFFK71—2006	NA	ND
Water	Q/TFFK71—2006	≤2%	Conforms
Appearance		Yellow Powder	Conforms

**STORAGE CONDITIONS**

STORAGE

Refer to the label

SHELF LIFE

2 Years

Analyst

Checker

Manager

# Product Analysis Report

**Product Name:** Absinthin

**Chrom-Column:** C18

**Lot Number:** 16121322

**Mobile Phase:** ACN:0.1%H3PO4 =45:5

**Temperature:** 25°C

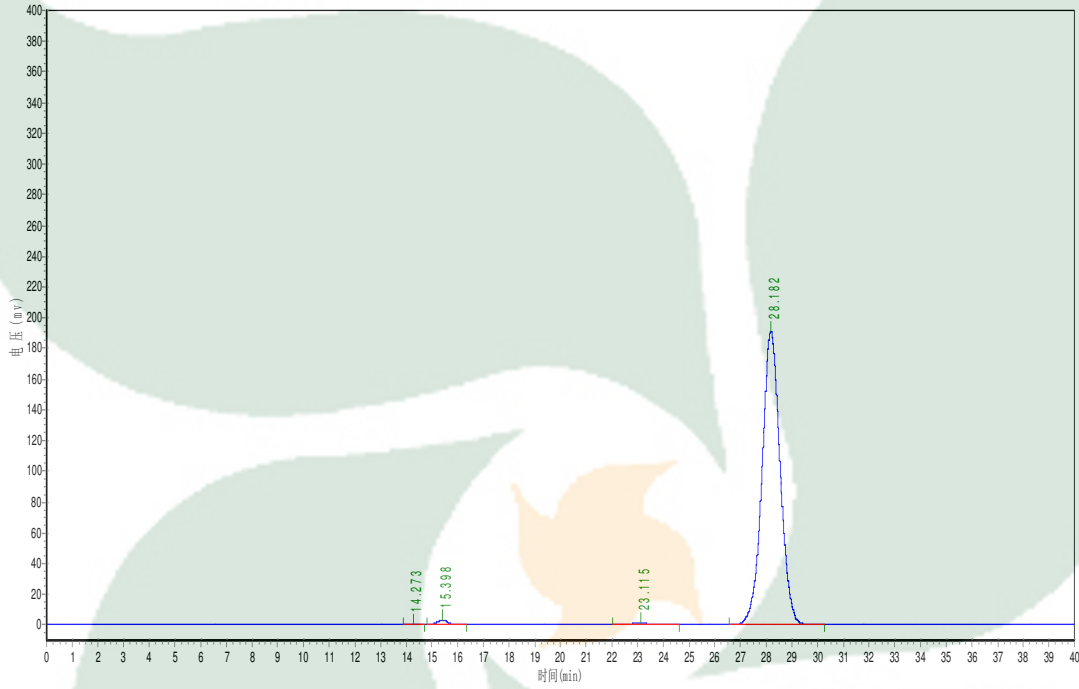
**Wavelength:** 350nm

**Detect Time:** 2016-12-13

**Inject Vol:** 20ul

**Analyst:** zhanghong

**Flow:** 1.0ml/min



No.	Ret.Time min	Height mAU	Area mAU*min	Rel.Area %
1	14.273	195.255	4124.600	0.0434
2	15.398	3251.737	92791.102	0.9757
3	23.115	1425.500	58760.602	0.6179
4	28.182	190652.844	9354601.000	98.3631