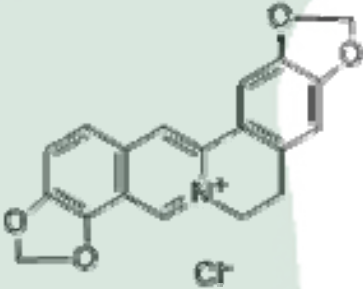


<b>PRODUCT ID</b>	E-0314	<b>Structure</b> 
<b>PRODUCT</b>	Coptisine Hcl/盐酸黄连碱	
<b>STANDARD TYPE</b>	Quantitative Reference Material (含量测定)	
<b>LOT NUMBER</b>	16113041	
<b>ASSAY METHOD</b>	HPLC,MS,NMR	
<b>DATE OF SAMPLE</b>	2016-11-30	
<b>DATE OF REPORT</b>	2016-11-30	

**CHEMICAL NAME**
**OTHER NAME**
**CHEMICAL FORMULA**

 C<sub>19</sub>H<sub>14</sub>ClNO<sub>4</sub>
**MOLECULAR WEIGHT(MW)**

355.77176

**CAS NUMBER**

6020-18-4

**CHEMICAL FAMILY**

Alkaloids生物碱类

**FROM**

毛茛科植物黄连Coptis chinensis Franch.

**ANALYTICAL RESULT**

TEST	METHOD	SPECIFICATION	RESULT
HPLC	Q/TFFK669—2010	NLT ≥98.0%	Conforms
NMR		Conforms	Conforms
MS		Conforms	Conforms
Residual Solvent	Q/TFFK542—2007	NA	ND
Water	Q/TFFK542—2007	≤2%	Conforms
Appearance		Purple red powder	Conforms

**STORAGE CONDITIONS**
**STORAGE**

Refer to the label

**SHELF LIFE**

2 Years

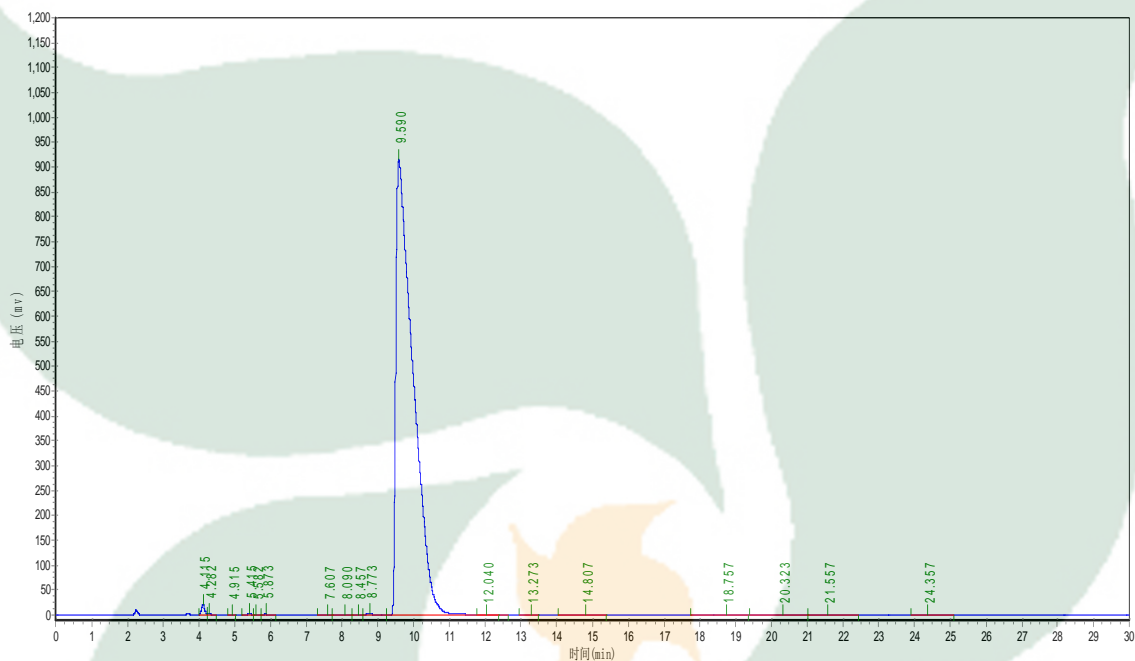
Analyst

Checker

Manager

# Product Analysis Report

<b>Product Name:</b>	Coptisine Hcl	<b>Chrom-Column:</b>	C18
<b>Lot Number:</b>	16113041	<b>Mobile Phase:</b>	ACN:0.1% H <sub>3</sub> PO <sub>4</sub> =25: 75
<b>Detector:</b>	UV	<b>Wavelength:</b>	346nm
<b>Detect Time:</b>	2016-11-30	<b>Inject Vol:</b>	20ul
<b>Analyst:</b>	zhanghong	<b>Flow:</b>	1.0ml/min



No.	Ret.Time min	Height mAU	Area mAU*min	Rel.Area %
1	4.115	20558.254	124695.016	0.4078
2	4.282	2305.593	12992.587	0.0425
3	4.915	518.806	3177.383	0.0104
4	5.415	1540.681	14330.481	0.0469
5	5.582	741.306	5663.250	0.0185
6	5.873	1257.400	11855.369	0.0388
7	7.607	261.121	3371.351	0.0110
8	8.090	1010.871	15297.949	0.0500
9	8.457	952.129	9879.699	0.0323
10	8.773	2640.034	29677.500	0.0971
11	9.590	914745.313	30229570.000	98.8727
12	12.040	528.838	8199.300	0.0268
13	13.273	184.848	3395.721	0.0111
14	14.807	1100.123	30485.098	0.0997
15	18.757	1143.529	32690.641	0.1069
16	20.323	422.094	17832.447	0.0583
17	21.557	519.071	12525.335	0.0410
18	24.357	286.029	8595.028	0.0281