



同田生物
TAUTO BIOTECH

地址：上海市张江高科技园区爱迪生路326号 邮编：201203

销售热线：400-820-3059

86-21-51320588-8008/8035/8026/8025

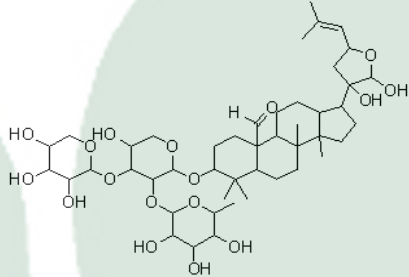
传真：86-21-51320502

QQ:800015916

URL: www.tautobiotech.com

Mail: sales2@tautobiotech.com

export2@tautobiotech.com

PRODUCT ID	E-2860	<p>Structure</p> 
PRODUCT	Gypenoside A/绞股蓝皂苷	
STANDARD TYPE	Quantitative Reference Material (含量测定)	
LOT NUMBER	17022722	
ASSAY METHOD	HPLC,NMR	
DATE OF SAMPLE	2017-02-27	
DATE OF REPORT	2017-02-27	

CHEMICAL NAME

OTHER NAME

CHEMICAL FORMULA

C₄₆H₇₄O₁₇

MOLECULAR WEIGHT(MV)

899.07

CAS NUMBER

157752-01-7

CHEMICAL FAMILY

Triterpenoids三萜类

FROM

绞股蓝 *Gynostemma pentaphyllum* (Thunb.) Makino

ANALYTICAL RESULT

TEST	METHOD	SPECIFICATION	RESULT
HPLC	Q/TFFK463—2007	NLT >98%	Conforms
NMR		Conforms	Conforms
MS		Conforms	Conforms
Residual Solvent	Q/TFFK463—2007	NA	ND
Water	Q/TFFK463—2007	≤2%	Conforms
Appearance		Pale yellow crystal	Conforms

STORAGE CONDITIONS

STORAGE

Refer to the label

SHELF LIFE

2 Years

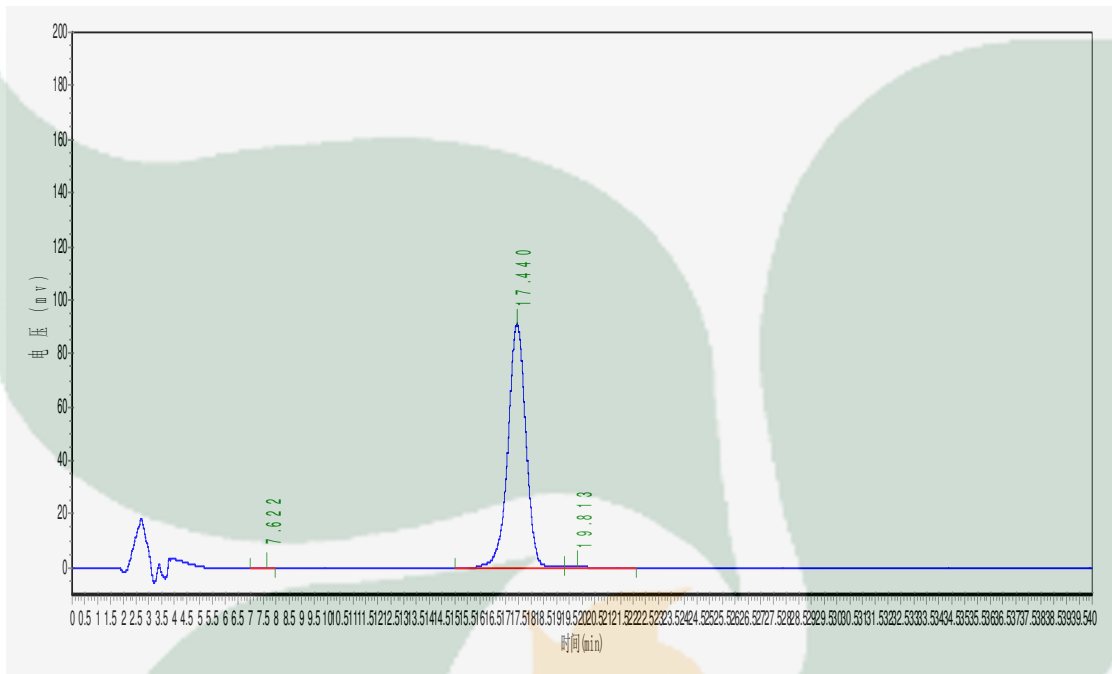
Analyst

Checker

Manager

Product Analysis Report

Product Name: Gypenoside A Chrom-Column: C18
Lot Number: 17022722 Mobile Phase: ACN:H₂O (37: 63)
Detector: UV Wavelength: 205nm
Detect Time: 2017-02-27 Inject Vol: 20ul
Analyst: shuzhilin Flow: 1.0ml/min



No.	Ret.Time min	Height mAU	Area mAU*min	Rel.Area %
1	7.622	170.929	5275.600	0.1158
2	17.440	91406.688	4503271.500	98.8142
3	19.813	888.295	48762.844	1.0700