



同田生物
TAUTO BIOTECH

地址：上海市张江高科技园区爱迪生路326号 邮编：201203

销售热线：400-820-3059

86-21-51320588-8008/8035/8026/8025

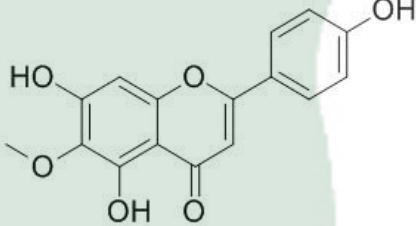
传真：86-21-51320502

QQ:800015916

MSN:Tauto_shanghai@hotmail.com

URL: www.tautobiotech.com

Mail: sales2@tautobiotech.com export2@tautobiotech.com

PRODUCT ID	E-0252	Structure 
PRODUCT	Hispidulin /高车前素	
STANDARD TYPE	Quantitative Reference Material (含量测定)	
LOT NUMBER	16121406	
ASSAY METHOD	HPLC,MS,NMR	
DATE OF SAMPLE	2016-12-14	
DATE OF REPORT	2016-12-14	

CHEMICAL NAME 5,7-dihydroxy-2-(4-hydroxyphenyl)-6-methoxychromen-4-one

OTHER NAME Dinatin, 6-O-Methylapigenin

CHEMICAL FORMULA C₁₆H₁₂O₆

MOLECULAR WEIGHT(MW) 300.26288

CAS NUMBER 1447-88-7

CHEMICAL FAMILY Flavonoids黄酮类

FROM 豚草Ambrosia artemisiifolia Linn.

ANALYTICAL RESULT

TEST	METHOD	SPECIFICATION	RESULT
HPLC	Q/TFFK589—2008	NLT ≥98.0%	Conforms
NMR		Conforms	Conforms
MS		Conforms	Conforms
Residual Solvent	Q/TFFK589—2008	NA	ND
Water	Q/TFFK589—2008	≤2%	Conforms
Appearance		Pale Yellow Powder	Conforms

STORAGE CONDITIONS

STORAGE Refer to the label

SHELF LIFE 2 Years

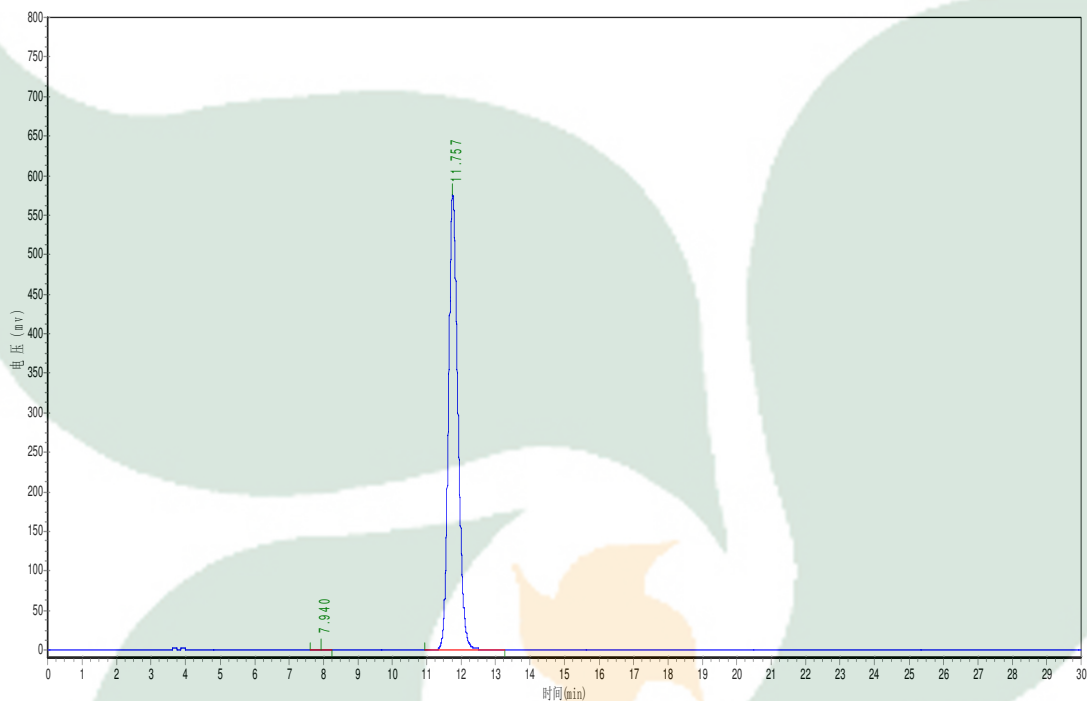
Analyst

Checker

Manager

Product Analysis Report

Product Name: Hispidulin Chrom-Column: C18
Lot Number: 16121406 Mobile Phase: ACN: 0.1%H3PO4 (38:62)
Detector: UV Wavelength: 335nm
Detect Time: 2016-12-14 Inject Vol: 20ul
Analyst: zhanghong Flow: 1.0ml/min



No.	Ret.Time min	Height mAU	Area mAU*min	Rel.Area %
1	7.940	757.813	9997.300	0.0909
2	11.757	574302.750	10986759.000	99.9091