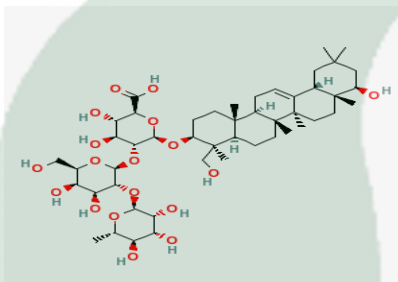


PRODUCT ID	E-0289	Structure 
PRODUCT	Soyasaponin Bb /大豆皂苷Bb	
STANDARD TYPE	Quantitative Reference Material (含量测定)	
LOT NUMBER	16042216	
ASSAY METHOD	HPLC,NMR	
DATE OF SAMPLE	2016-04-22	
DATE OF REPORT	2016-04-22	

CHEMICAL NAME

(2S,3S,4S,5R,6R)-6-
[[[(3S,4S,4aR,6aR,6bS,8aR,9R,12aS,14aR,14bR)-9-
hydroxy-4-(hydroxymethyl)-4,6a,6b,8a,11,11,14b-
heptamethyl-1,2,3,4a,5,6,7,8,9,10,12,12a,14,14a-
tetradecahydropicen-3-yl]oxy]-5-[(2S,3R,4S,5R,6R)-4,5-
dihydroxy-6-(hydroxymethyl)-3-[(2S,3R,4R,5R,6S)-3,4,5-
trihydroxy-6-methyloxan-2-yl]oxyoxan-2-yl]oxy-3,4-
dihydroxyoxane-2-carboxylic acid

OTHER NAME

CHEMICAL FORMULA

C₄₈H₇₈O₁₈

MOLECULAR WEIGHT(MV)

943.12212

CAS NUMBER

51330-27-9

CHEMICAL FAMILY

Saponins 皂苷类

FROM

豆科植物大豆Glycinemax(L.)merr种子

ANALYTICAL RESULT

TEST	METHOD	SPECIFICATION	RESULT
HPLC	Q/TFFK760—2010	NLT ≥98.0%	Conforms
NMR		Conforms	Conforms
MS		Conforms	Conforms
Residual Solvent	Q/TFFK760—2010	NA	ND
Water	Q/TFFK760—2010	≤2%	Conforms
Appearance		White Powder	Conforms

STORAGE CONDITIONS

STORAGE

Refer to the label

SHELF LIFE

2 Years

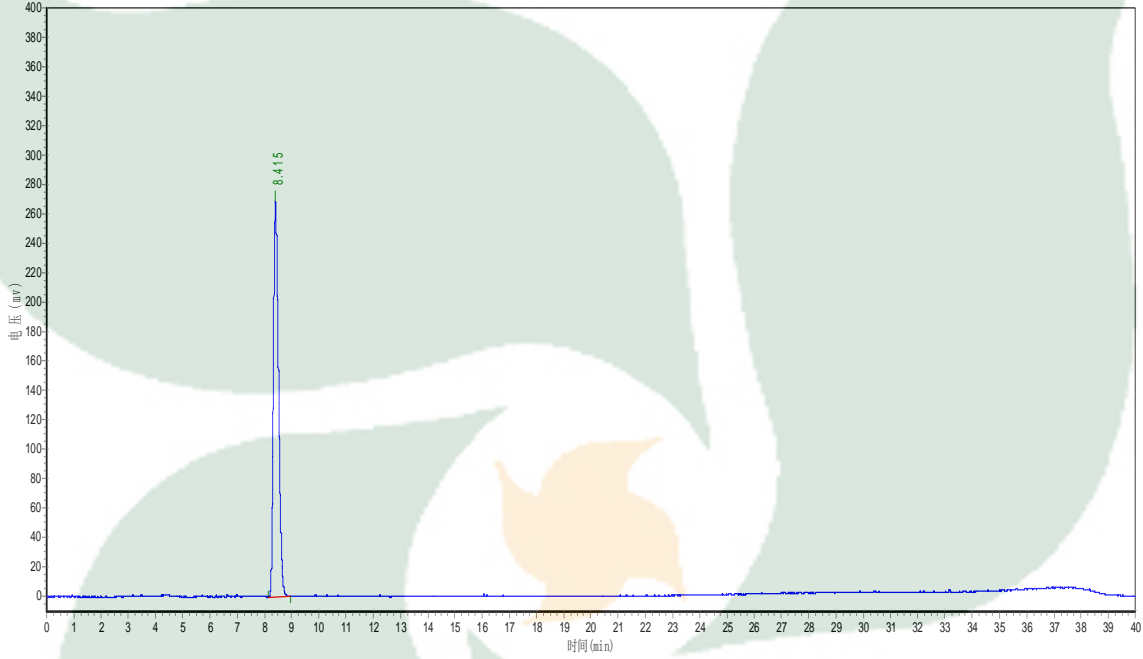
Analyst

Checker

Manager

Product Analysis Report

Product Name:	Soyasaponin Bb	Chrom-Column:	Arcus C18
Lot Number:	16042216	Mobile Phase:	ACN:H2O (Grads)
Detect Time:	2016-4-22	Detector:	ELSD
Inject Vol:	20.0 μ L	Tube Temp:	105 $^{\circ}$ C
Flow:	1.0ml/min	Gas Flow:	2.5 L/min
Analyst:	zhufangfang	Impactor:	Off



No.	Ret.Time min	Height mAU	Area mAU*min	Rel.Area %			
1	8.415	268895.938	3537358.250	100.0000			
Grads							
time/min	0	5	15	25	30	35	40
ACN	20	40	40	60	60	90	90
H2O	80	60	60	40	40	10	10