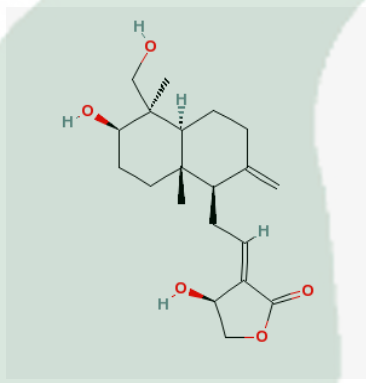


<b>PRODUCT ID</b>	E-0066	<b>Structure</b> 
<b>PRODUCT</b>	Andrographolide /穿心莲内酯	
<b>STANDARD TYPE</b>	Quantitative Reference Material (含量测定)	
<b>LOT NUMBER</b>	16090641	
<b>ASSAY METHOD</b>	HPLC,MS,NMR	
<b>DATE OF SAMPLE</b>	2016-09-06	
<b>DATE OF REPORT</b>	2016-09-06	

**CHEMICAL NAME**

(3E,4S)-3-[2-[(1R,4aS,5R,6R,8aS)-6-hydroxy-5-(hydroxymethyl)-5,8a-dimethyl-2-methylidene-3,4,4a,6,7,8-hexahydro-1H-naphthalen-1-yl]ethylidene]-4-hydroxyoxolan-2-one

**OTHER NAME**

Andrographis, Andrographalide

**CHEMICAL FORMULA**

C<sub>20</sub>H<sub>30</sub>O<sub>5</sub>

**MOLECULAR WEIGHT(MW)**

350.4492

**CAS NUMBER**

5508-58-7

**CHEMICAL FAMILY**

Diterpenoids 二萜类

**FROM**

Andrographis Paniculata Nees

**ANALYTICAL RESULT**

TEST	METHOD	SPECIFICATION	RESULT
HPLC	Q/TFFK67—2006	NLT ≥98.0%	Conforms
NMR		Conforms	Conforms
MS		Conforms	Conforms
<b>Residual Solvent</b>	Q/TFFK67—2006	NA	ND
Water	Q/TFFK67—2006	≤2%	Conforms
Appearance		White Powder	Conforms

**STORAGE CONDITIONS**

STORAGE

Refer to the label

SHELF LIFE

2 Years

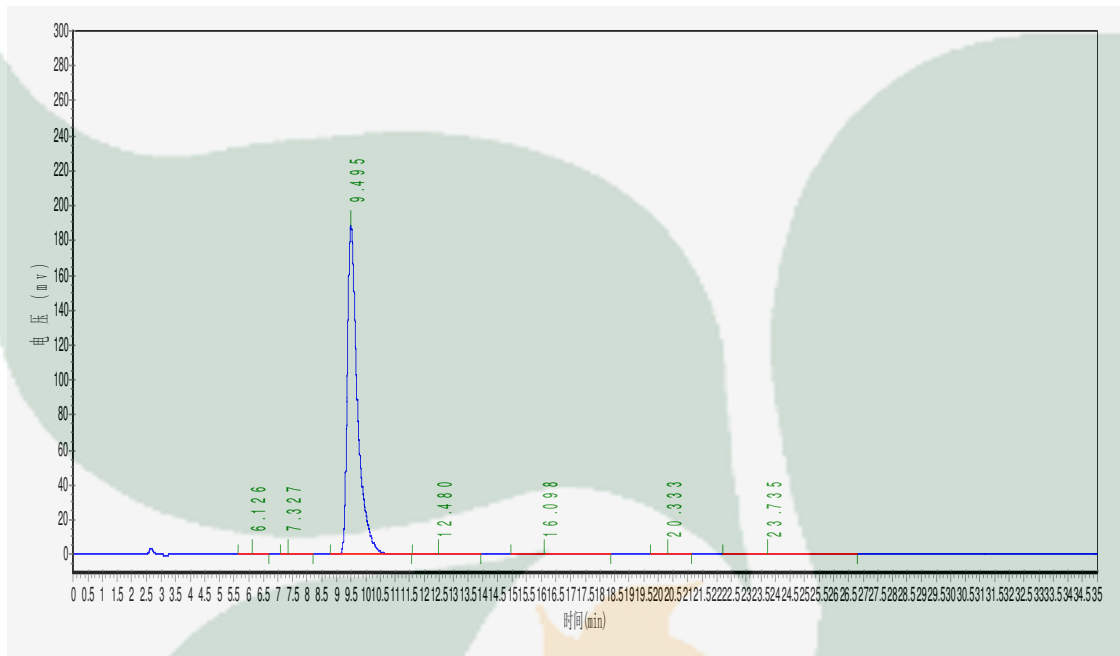
Analyst

Checker

Manager

# Product Analysis Report

**Product Name:** Andrographolide **Chrom-Column:** C18  
**Lot Number:** 16090641 **Mobile Phase:** MeOH:H<sub>2</sub>O=52:48  
**Temperature:** 25°C **Wavelength:** 225nm  
**Detect Time:** 2016-09-06 **Inject Vol:** 20ul  
**Analyst:** shuzhilin **Flow:** 1.0ml/min



No.	Ret.Time min	Height mAU	Area mAU*min	Rel.Area %
1	6.126	292.063	8367.500	0.1806
2	7.327	338.313	7074.521	0.1527
3	9.495	187787.516	4556307.000	98.3148
4	12.480	297.957	20613.000	0.4448
5	16.098	255.333	23445.100	0.5059
6	20.333	91.143	3772.500	0.0814
7	23.735	123.333	14826.200	0.3199