



同田生物
TAUTO BIOTECH

地址：上海市张江高科技园区爱迪生路326号 邮编：201203

销售热线：400-820-3059

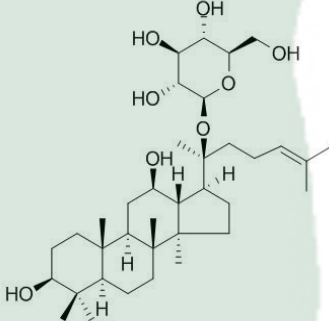
86-21-51320588-8008/8035/8026/8025

传真：86-21-51320502

QQ:800015916

URL: www.tautobiotech.com

Mail: sales2@tautobiotech.com export2@tautobiotech.com

PRODUCT ID	E-0120	<p align="center">Structure</p> 
PRODUCT	20(S)-Ginsenoside C-K /20(S)-人参皂苷C-K	
STANDARD TYPE	Quantitative Reference Material (含量测定)	
LOT NUMBER	16111622	
ASSAY METHOD	HPLC,MS,NMR	
DATE OF SAMPLE	2016-11-16	
DATE OF REPORT	2016-11-16	

CHEMICAL NAME 20(S)-Protopanaxadiol 20-O-D-glucopyranoside

OTHER NAME Ginsenoside CK

CHEMICAL FORMULA C₃₆H₆₁O₈

MOLECULAR WEIGHT(MW) 621.88

CAS NUMBER 39262-14-1

CHEMICAL FAMILY Triterpenoids三萜类

FROM Panax ginseng C.A.Mey

ANALYTICAL RESULT

TEST	METHOD	SPECIFICATION	RESULT
HPLC	Q/TFFK113—2007	NLT ≥98.0%	Conforms
NMR		Conforms	Conforms
MS		Conforms	Conforms
Residual Solvent	Q/TFFK113—2007	NA	ND
Water	Q/TFFK113—2007	≤2%	Conforms
Appearance		White Powder	Conforms

STORAGE CONDITIONS

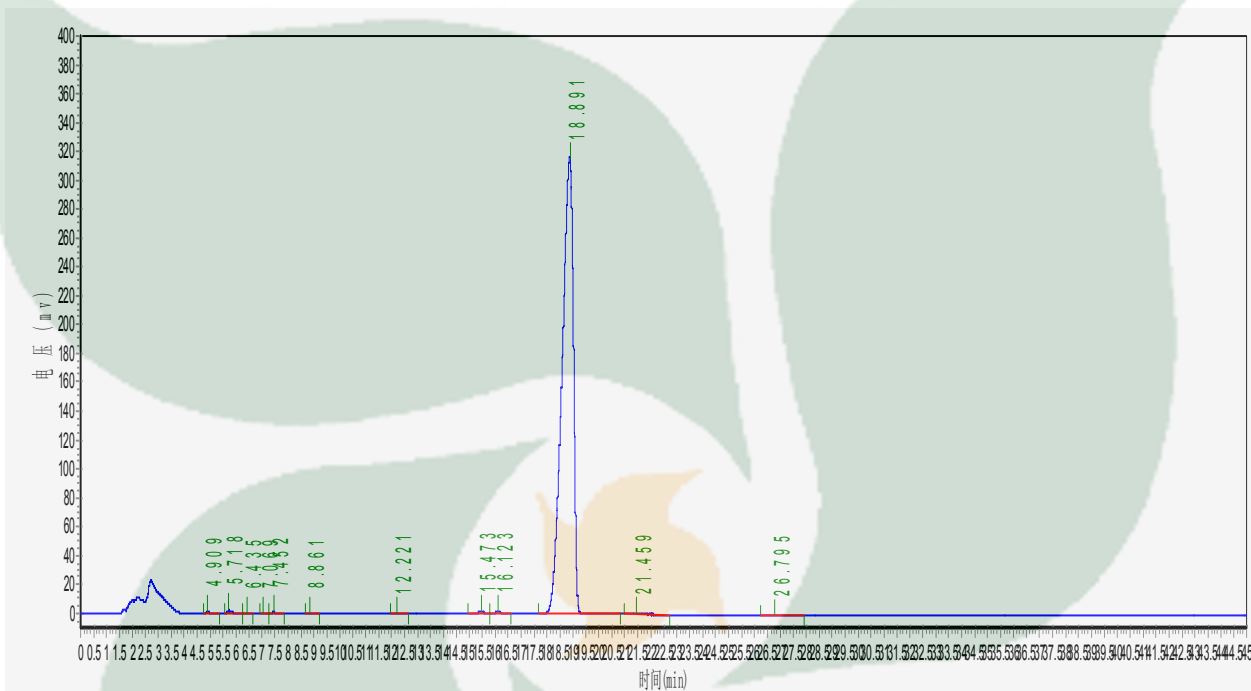
STORAGE Refer to the label

SHELF LIFE 2 Years

Analyst Checker Manager

Product Analysis Report

Product Name: 20(S)-Ginsenoside C-K Chrom-Column: C18
Lot Number: 16111622 Mobile Phase: ACN: 0.1%H₃PO₄=55:45
Temperature: 25°C Wavelength: 203nm
Detect Time: 2016-11-16 Inject Vol: 20μL
Analyst: shuzhilin Flow: 1ml/min



No.	Ret.Time min	Height mAU	Area mAU*min	Rel.Area %
1	4.909	748.863	6128.800	0.0623
2	5.718	1964.587	25867.420	0.2630
3	6.435	293.761	3755.135	0.0382
4	7.069	404.383	3914.702	0.0398
5	7.452	709.983	7179.448	0.0730
6	8.861	269.879	3871.600	0.0394
7	12.221	461.119	6869.700	0.0698
8	15.473	1548.949	30445.600	0.3095
9	16.123	1608.434	31327.201	0.3185
10	18.891	316275.781	9702875.000	98.6456
11	21.459	279.045	7723.081	0.0785
12	26.795	166.960	6134.700	0.0624