



同田生物  
TAUTO BIOTECH

地址：上海市张江高科技园区爱迪生路326号 邮编：201203

销售热线：400-820-3059

86-21-51320588-8008/8035/8026/8025

传真：86-21-51320502

QQ:800015916

URL: www.tautobiotech.com

Mail: sales2@tautobiotech.com export2@tautobiotech.com

PRODUCT ID	E-2328	<b>Structure</b>  <chem>CC(C)N[C@@H](O)Cc1ccc(O)cc1.[Cl-]</chem>
PRODUCT	Synephrine hydrochloride/辛弗林 盐酸盐	
STANDARD TYPE	Quantitative Reference Material (含量测定)	
LOT NUMBER	16071924	
ASSAY METHOD	HPLC,NMR	
DATE OF SAMPLE	2016-07-19	
DATE OF REPORT	2016-07-19	

**CHEMICAL NAME**

**OTHER NAME**

**CHEMICAL FORMULA**

C<sub>9</sub>H<sub>13</sub>NO<sub>2</sub>.HCl

**MOLECULAR WEIGHT(MW)**

203.67

**CAS NUMBER**

5985-28-4

**CHEMICAL FAMILY**

**FROM**

枳实 (AurantiiFructusImmaturus)

**ANALYTICAL RESULT**

TEST	METHOD	SPECIFICATION	RESULT
HPLC	Q/TFFK680—2006	NLT ≥97.0%	Conforms
NMR		Conforms	Conforms
MS		Conforms	Conforms
Residual Solvent	Q/TFFK680—2006	NA	ND
Water	Q/TFFK680—2006	≤2%	Conforms
Appearance		White Powder	Conforms

**STORAGE CONDITIONS**

**STORAGE**

Refer to the label

**SHELF LIFE**

2 Years

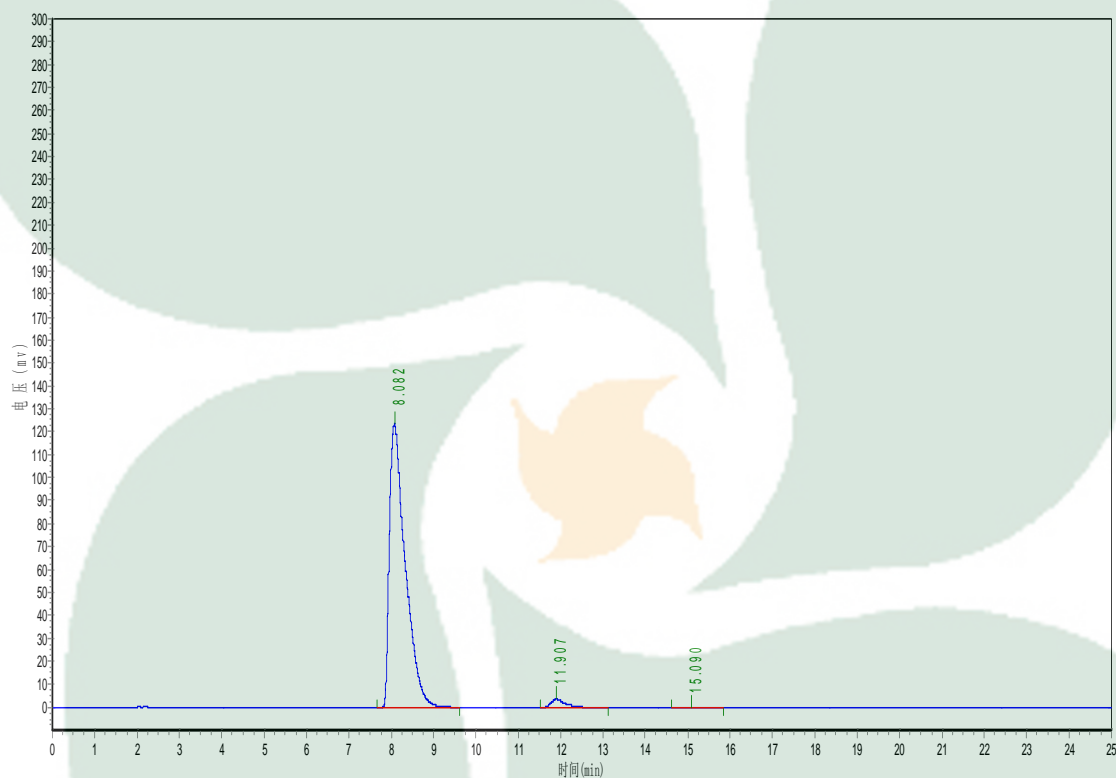
Analyst

Checker

Manager

# Product Analysis Report

Product Name: Synephrine hydrochloride      Chrom-Column: C18  
Lot Number: 16071924      Mobile Phase: MeOH:H2O(0.1%SDS)=62:38  
Temperature: 25°C      Wavelength: 274nm  
Detect Time: 2016-07-19      Inject Vol: 20.0 µL  
Analyst: shuzhilin      Flow: 1.00 ml/min



No.	Ret.Time min	Height mAU	Area mAU*min	Rel.Area %
1	8.082	123626.250	3202663.000	97.1671
2	11.907	3623.875	87698.297	2.6607
3	15.090	198.630	5675.200	0.1722