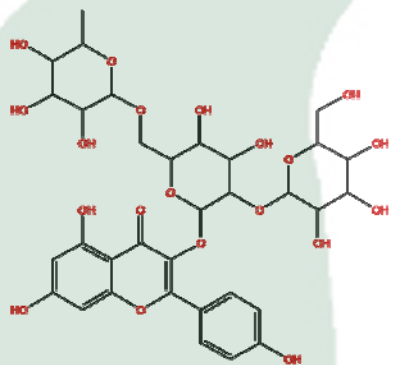


<b>PRODUCT ID</b>	E-1179	<b>Structure</b> 
<b>PRODUCT</b>	Camelliaside A/山茶苷A	
<b>STANDARD TYPE</b>	Quantitative Reference Material (含量测定)	
<b>LOT NUMBER</b>	16052023	
<b>ASSAY METHOD</b>	HPLC,MS,NMR	
<b>DATE OF SAMPLE</b>	2016-05-20	
<b>DATE OF REPORT</b>	2016-05-20	

**CHEMICAL NAME**
**OTHER NAME**
**CHEMICAL FORMULA**

 C<sub>33</sub>H<sub>40</sub>O<sub>20</sub>
**MOLECULAR WEIGHT(MW)**

756.66

**CAS NUMBER**

135095-52-2

**CHEMICAL FAMILY**

Flavonoids黄酮类

**FROM**

kamellia oleifela abel seeds油茶

**ANALYTICAL RESULT**

TEST	METHOD	SPECIFICATION	RESULT
HPLC	Q/TFFK780—2010	NLT ≥98.0%	Conforms
NMR		Conforms	Conforms
MS		Conforms	Conforms
<b>Residual Solvent</b>	Q/TFFK780—2010	NA	ND
<b>Water</b>	Q/TFFK780—2010	≤2%	Conforms
<b>Appearance</b>		Pale Yellow Crystal	Conforms

**STORAGE CONDITIONS**
**STORAGE**

Refer to the label

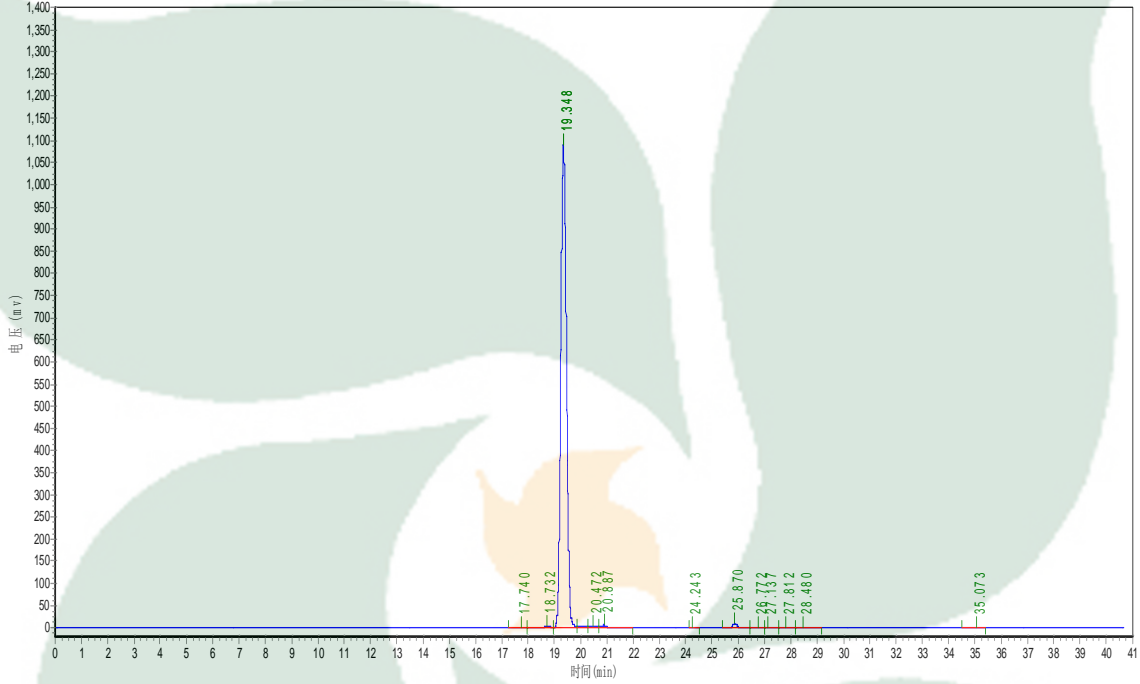
**SHELF LIFE**

2 Years

**Analyst**
**Checker**
**Manager**

# Product Analysis Report

<b>Product Name:</b>	Camelliaside A	<b>Chrom-Column:</b>	Arcus C18
<b>Lot Number:</b>	16052023	<b>Mobile Phase:</b>	ACN:0.1% H3PO4 ( Grads 10%-25% )
<b>Detector:</b>	UV	<b>Wavelength:</b>	347nm
<b>Detect Time:</b>	2016-05-20	<b>Inject Vol:</b>	20ul
<b>Analyst:</b>	zhufangfang	<b>Flow:</b>	1.0ml/min



No.	Ret.Time min	Height mAU	Area mAU*min	Rel.Area %
1	17.740	1027.678	15907.667	0.0948
2	18.732	3164.900	88283.453	0.5262
3	19.348	1089774.000	16272931.000	96.9942
4	19.348	3614.911	65968.219	0.3932
5	20.472	3875.481	82193.227	0.4899
6	20.887	5611.119	100611.648	0.5997
7	24.243	269.942	2290.550	0.0137
8	25.870	8547.569	101885.359	0.6073
9	26.772	1164.566	20530.934	0.1224
10	27.137	649.243	7881.550	0.0470
11	27.812	748.718	9242.322	0.0551
12	28.480	254.098	4012.034	0.0239
13	35.073	414.477	5488.300	0.0327