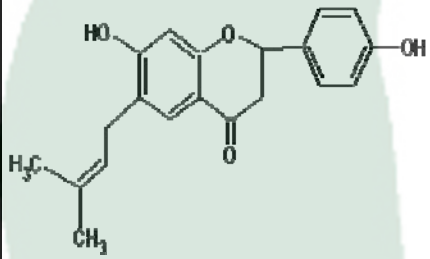


PRODUCT ID	E-0642	Structure 
PRODUCT	Bavachin/补骨脂甲素	
STANDARD TYPE	Quantitative Reference Standard/含量测定	
LOT NUMBER	16041321	
ASSAY METHOD	HPLC,NMR	
DATE OF SAMPLE	2016-04-13	
DATE OF REPORT	2016-04-13	

CHEMICAL NAME
OTHER NAME

补骨脂二氢黄酮

CHEMICAL FORMULA
 $C_{20}H_{20}O_4$
MOLECULAR WEIGHT(MV)

324.4

CAS NUMBER

19879-32-4

CHEMICAL FAMILY
FROM

 补骨脂 *Psoralea corylifolia*
ANALYTICAL RESULT

TEST	METHOD	SPECIFICATION	RESULT
HPLC	Q/TFFK512—2007	NLT $\geq 98.0\%$	Conforms
NMR		Conforms	Conforms
MS		Conforms	Conforms
Residual Solvent	Q/TFFK512—2007	NA	ND
Water	Q/TFFK512—2007	$\leq 2\%$	Conforms
Appearance		White powder	Conforms

STORAGE CONDITIONS

STORAGE

Refer to the label

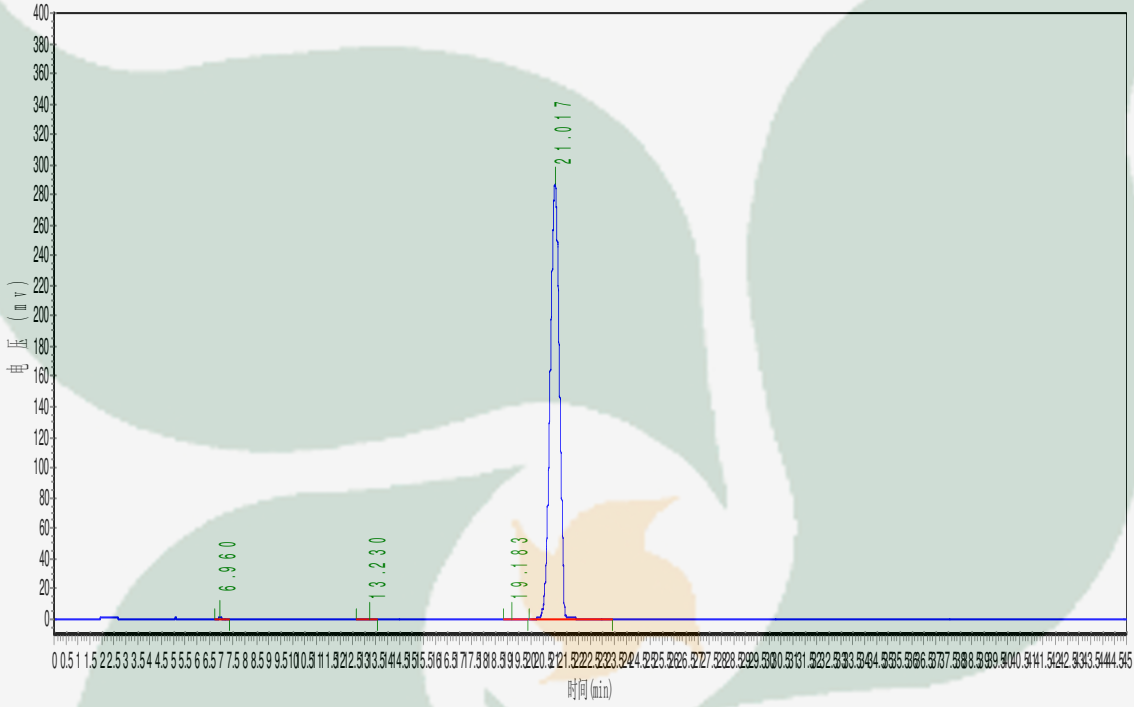
SHELF LIFE

2 Years

Analyst
Checker
Manager

Product Analysis Report

Product Name: Bavachin **Chrom-Column:** C18
Lot Number: 16041321 **Mobile Phase:** 45% ACN
Detector: UV **Wavelength:** 247nm
Detect Time: 2016-04-13 **Inject Vol:** 20ul
Analyst: shuzhilin **Flow:** 1.0ml/min



No.	Ret.Time min	Height mAU	Area mAU*min	Rel.Area %
1	6.960	452.080	7395.810	0.0954
2	13.230	237.333	4858.000	0.0626
3	19.183	144.618	4421.199	0.0570
4	21.017	286049.406	7738102.000	99.7850