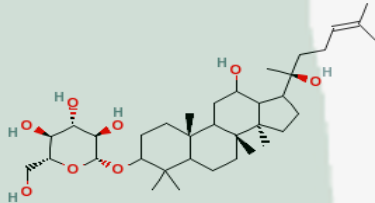


PRODUCT ID	E-0121	Structure 
PRODUCT	20(S)-Ginsenoside Rh2 /20(S)-人参皂苷 Rh2	
STANDARD TYPE	Quantitative Reference Material (含量测定)	
LOT NUMBER	15061822	
ASSAY METHOD	HPLC,MS,NMR	
DATE OF SAMPLE	2015-06-18	
DATE OF REPORT	2015-06-18	

CHEMICAL NAME

(2R,3R,4S,5S,6R)-2-((8R,10R,12R,13R,14S,17S)-12-hydroxy-17-((S)-2-hydroxy-6-methylhept-5-en-2-yl)-4,4,8,10,14-pentamethyl-hexadecahydro-1H-cyclopenta[a]phenanthren-3-yloxy)-6-(hydroxymethyl)-tetrahydro-2H-pyran-3,4,5-triol

OTHER NAME

Ginsenoside Rh2

CHEMICAL FORMULA

C₃₆H₆₂O₈

MOLECULAR WEIGHT(MW)

622.87268

CAS NUMBER

78214-33-2

CHEMICAL FAMILY

Triterpenes 三萜类

FROM

Panax ginseng C. A. Mey

ANALYTICAL RESULT

TEST	METHOD	SPECIFICATION	RESULT
HPLC	Q/TFFK324—2004	NLT ≥97.0%	Conforms
NMR		Conforms	Conforms
MS		Conforms	Conforms
Residual Solvent	Q/TFFK324—2004	NA	ND
Water	Q/TFFK324—2004	≤2%	Conforms
Appearance		White powder	Conforms

STORAGE CONDITIONS

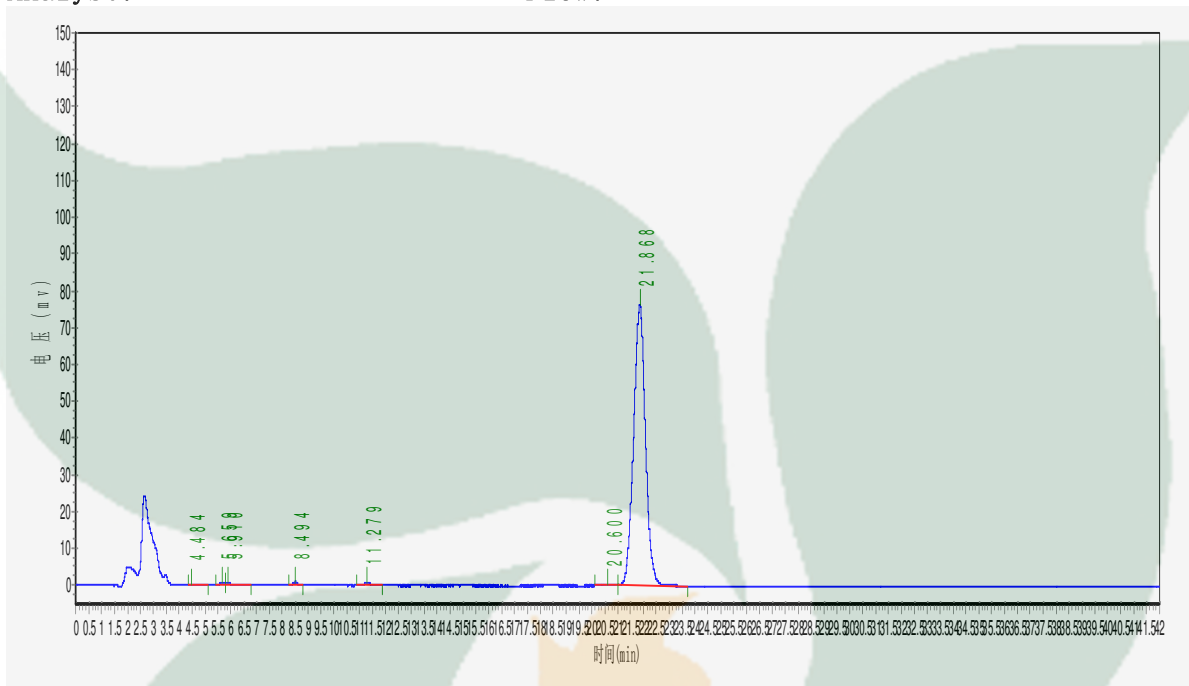
STORAGE
SHELF LIFE

Refer to the label
2 Years

Product Analysis Report

Product Name: 20(S)-Ginsenoside
 Lot Number: 15061822
 Detector: UV
 Detect Time: 2015-06-18
 Analyst: shuzhilin

Chrom-Column: C18
 Mobile Phase: ACN:0.1%H3PO4=55:45
 Wavelength: 203nm
 Inject Vol: 20ul
 Flow: 1.0ml/min



No.	Ret.Time min	Height mAU	Area mAU*min	Rel.Area %
1	4.484	192.962	3383.229	0.1346
2	5.659	654.022	11139.531	0.4432
3	5.910	676.045	14855.195	0.5910
4	8.494	982.000	13527.634	0.5382
5	11.279	752.172	13635.300	0.5425
6	20.600	439.926	12349.837	0.4914
7	21.868	75899.555	2444552.250	97.2591