



同田生物
TAUTO BIOTECH

地址：上海市张江高科技园区爱迪生路326号 邮编：201203

销售热线：400-820-3059

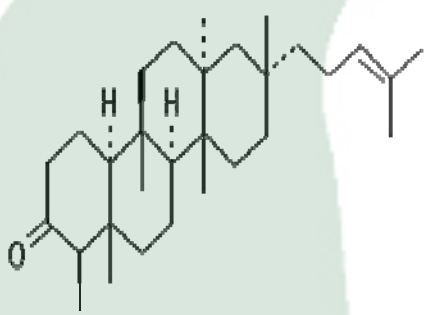
86-21-51320588-8008/8035/8026/8025

传真：86-21-51320502

QQ:800015916

URL: www.tautobiotech.com

Mail: sales2@tautobiotech.com export2@tautobiotech.com

PRODUCT ID	E-0645	Structure 
PRODUCT	Shionone/紫菀酮	
STANDARD TYPE	Quantitative Reference Material (含量测定)	
LOT NUMBER	14101423	
ASSAY METHOD	HPLC,NMR	
DATE OF SAMPLE	2014-10-14	
DATE OF REPORT	2014-10-14	

CHEMICAL NAME 2-shinonen-3-one

OTHER NAME

CHEMICAL FORMULA C₃₀H₅₀O

MOLECULAR WEIGHT(MW) 426.72

CAS NUMBER 10376-48-4

CHEMICAL FAMILY Terpenoids 萜类

FROM 菊科植物紫菀Aster tataricus L. f. 的根及根茎

ANALYTICAL RESULT

TEST	METHOD	SPECIFICATION	RESULT
HPLC	Q/TFFK49—2006	NLT ≥98.0%	Conforms
NMR		Conforms	Conforms
MS		Conforms	Conforms
Residual Solvent	Q/TFFK49—2006	NA	ND
Water	Q/TFFK49—2006	≤2%	Conforms
Appearance		White Powder	Conforms

STORAGE CONDITIONS

STORAGE Refer to the label

SHELF LIFE 2 Years

Analyst

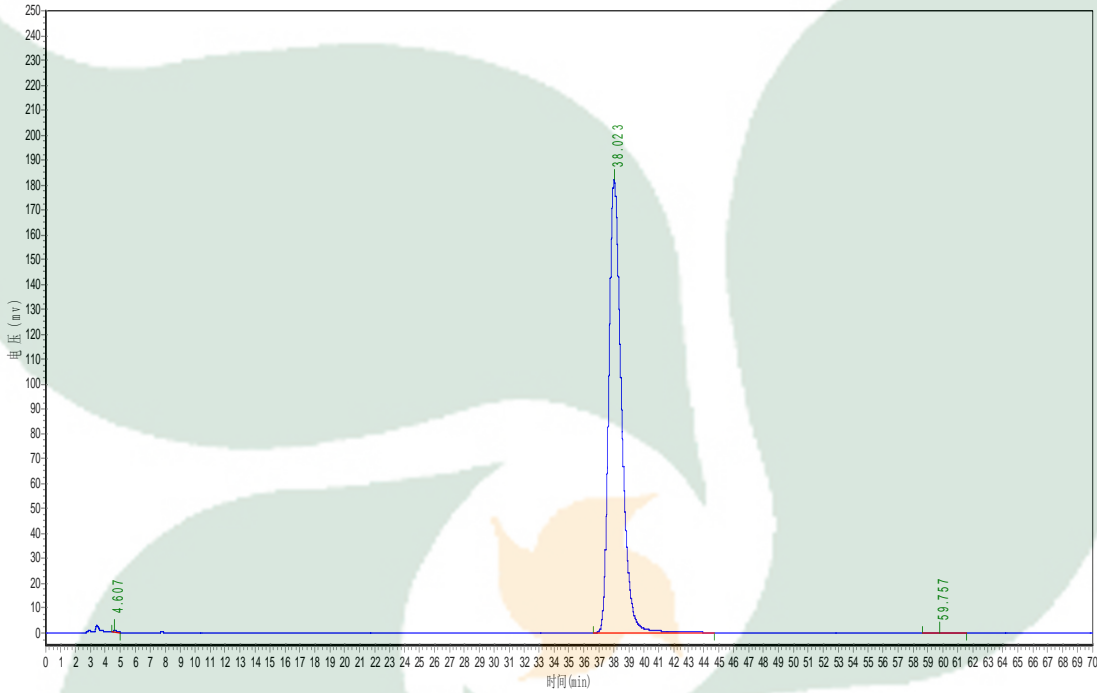
Checker

Manager

Product Analysis Report

Product Name: Shionone
Lot Number: 14101423
Detect Temp: 40°C
Detect Time: 2014-10-14
Analyst: zhufangfang

Chrom-Column: C18
Mobile Phase: 100% ACN
Wavelength: 200nm
Inject Vol: 20ul
Flow: 1.0ml/min



No.	Ret.Time min	Height mAU	Area mAU*min	Rel.Area %
1	4.607	766.667	10139.493	0.0944
2	38.023	181944.953	10722888.000	99.7940
3	59.757	136.778	11992.300	0.1116