



同田生物
TAUTO BIOTECH

地址：上海市张江高科技园区爱迪生路326号 邮编：201203

销售热线：400-820-3059

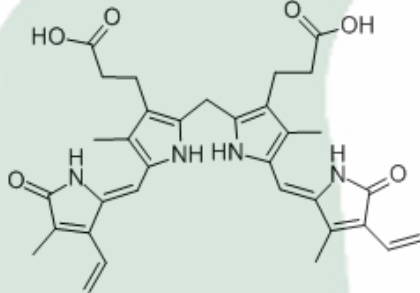
86-21-51320588-8008/8035/8026/8025

传真：86-21-51320502

QQ:800015916

URL: www.tautobiotech.com

Mail: sales2@tautobiotech.com export2@tautobiotech.com

PRODUCT ID	E-1051	Structure 
PRODUCT	Bilirubin/胆红素	
STANDARD TYPE	Quantitative Reference Material (含量测定)	
LOT NUMBER	14103031	
ASSAY METHOD	HPLC,MS,NMR	
DATE OF SAMPLE	2014-10-30	
DATE OF REPORT	2014-10-30	

CHEMICAL NAME

OTHER NAME

CHEMICAL FORMULA

C33H36N4O6

MOLECULAR WEIGHT(MW)

584.66

CAS NUMBER

635-65-4

CHEMICAL FAMILY

FROM

ANALYTICAL RESULT

TEST	METHOD	SPECIFICATION	RESULT
HPLC	Q/TFFK771—2010	NLT ≥98.0%	Conforms
NMR		Conforms	Conforms
MS		Conforms	Conforms
Residual Solvent	Q/TFFK771—2010	NA	ND
Water	Q/TFFK771—2010	≤2%	Conforms
Appearance		Red Powder	Conforms

STORAGE CONDITIONS

STORAGE

Refer to the label

SHELF LIFE

2 Years

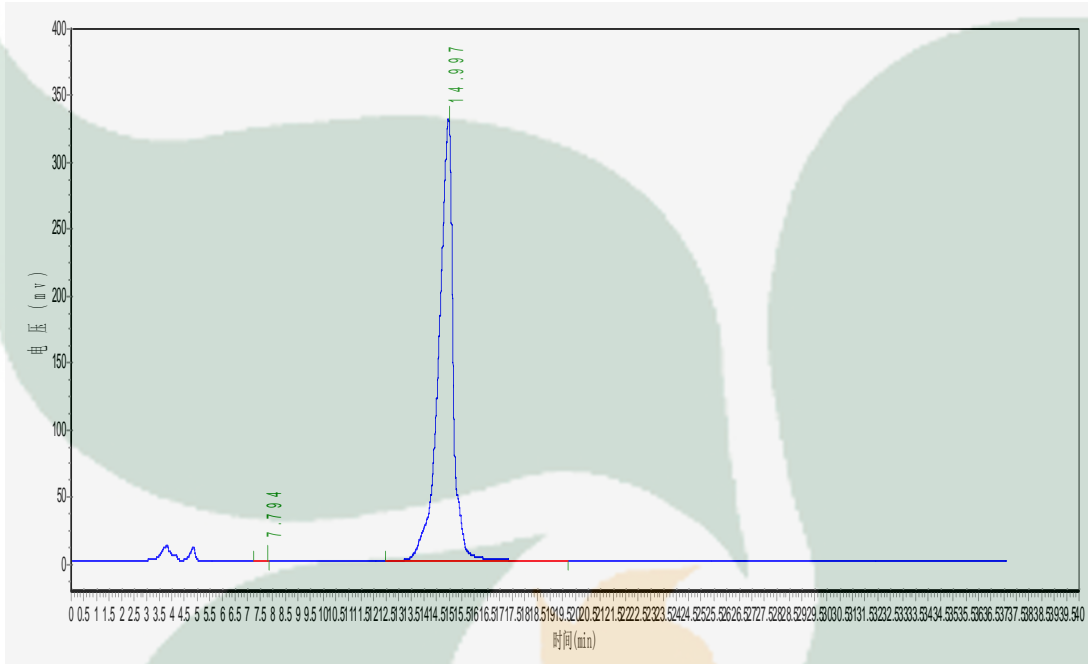
Analyst

Checker

Manager

Product Analysis Report

Product Name: Bilirubin Chrom-Column: ArCUS C18
Lot Number: 14103031 Mobile Phase: MeOH:ACN:1%HAC=65:32:3
Detector: UV Wavelength: 455nm
Detect Time: 2014-10-30 Inject Vol: 5ul
Analyst: xiayuexia Flow: 1.0ml/min



No.	Ret.Time min	Height mAU	Area mAU*min	Rel.Area %
1	7.794	303.254	5782.910	0.0438
2	14.997	329432.531	13194980.000	99.9562