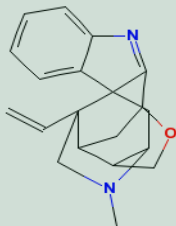


PRODUCT ID	E-0308	Structure 
PRODUCT	Koumine /钩吻素子	
STANDARD TYPE	Quantitative Reference Standard/ 含量测定	
LOT NUMBER	14112122	
ASSAY METHOD	HPLC,MS,NMR	
DATE OF SAMPLE	2014-11-21	
DATE OF REPORT	2014-11-21	

CHEMICAL NAME 7,20(2H,19H)-Cyclovobasan, 1,2,18,19-tetrahydro-3,17-epoxy-, (3R,7alpha,20alpha)-

OTHER NAME

CHEMICAL FORMULA C₂₀H₂₂N₂O

MOLECULAR WEIGHT(MW) 306.40148

CAS NUMBER 1358-76-5

CHEMICAL FAMILY Alkaloids生物碱类

FROM 葫蔓藤科植物葫蔓藤钩吻Gelsemium elegans (Gardn. et Champ.) Benth.

ANALYTICAL RESULT

TEST	METHOD	SPECIFICATION	RESULT
HPLC	Q/TFFK170—2007	NLT ≥98.0%	Conforms
NMR		Conforms	Conforms
MS		Conforms	Conforms
Residual Solvent	Q/TFFK170—2007	NA	ND
Water	Q/TFFK170—2007	≤2%	Conforms
Appearance		White Powder	Conforms

STORAGE CONDITIONS

STORAGE Refer to the label

SHELF LIFE 2 Years

Analyst

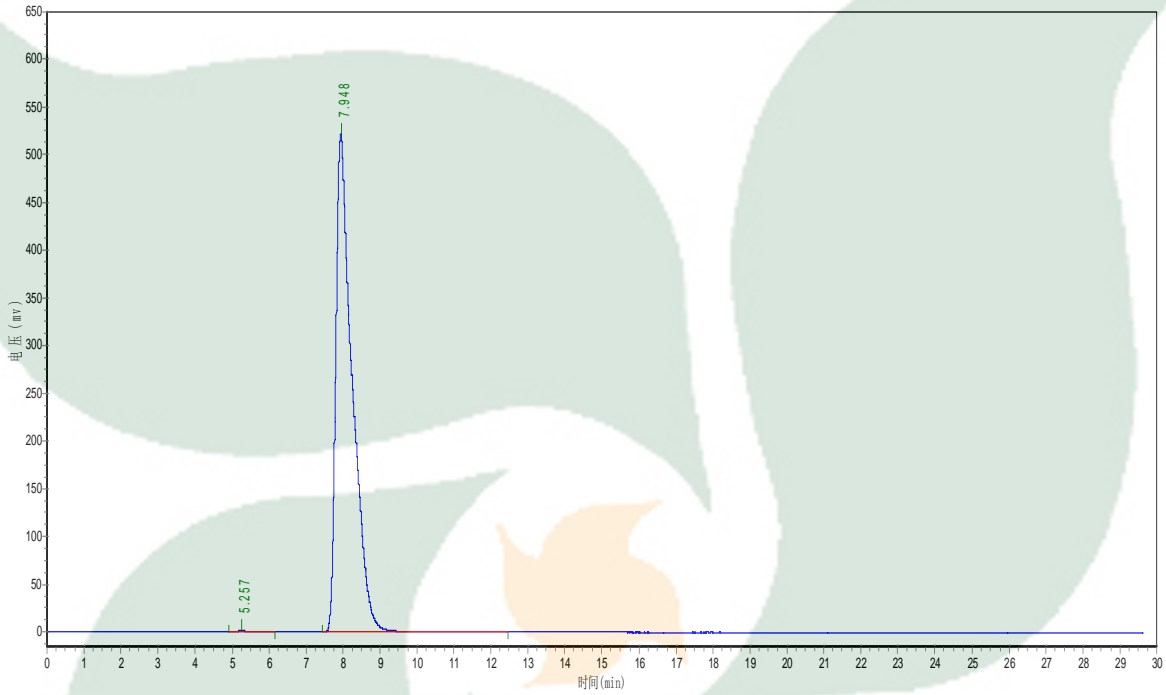
Checker

Manager

Product Analysis Report

Product Name: Koumine
Lot Number: 14112122
Detector: UV
Detect Time: 2014-11-21
Analyst: zhufangfang

Chrom-Column: C18
Mobile Phase: MeOH:0.2%TEA (70:30)
Wavelength: 254nm
Inject Vol: 20ul
Flow: 1.0ml/min



No.	Ret.Time min	Height mAU	Area mAU*min	Rel.Area %
1	5.257	1749.215	43428.750	0.2699
2	7.948	521429.844	16046770.000	99.7301