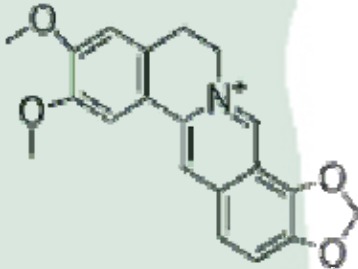


<b>PRODUCT ID</b>	E-0976	<b>Structure</b>  
<b>PRODUCT</b>	Epiberberine/表小檗碱	
<b>STANDARD TYPE</b>	Quantitative Reference Material (含量测定)	
<b>LOT NUMBER</b>	14122421	
<b>ASSAY METHOD</b>	HPLC,MS,NMR	
<b>DATE OF SAMPLE</b>	2014-12-24	
<b>DATE OF REPORT</b>	2014-12-24	

**CHEMICAL NAME**

**OTHER NAME**

**CHEMICAL FORMULA**

C<sub>20</sub>H<sub>18</sub>NO<sub>4</sub><sup>+</sup>

**MOLECULAR WEIGHT(MW)**

336.36

**CAS NUMBER**

6873-9-2

**CHEMICAL FAMILY**

**FROM**

**ANALYTICAL RESULT**

TEST	METHOD	SPECIFICATION	RESULT
<b>HPLC</b>	Q/TFFK699—2006	NLT ≥98.0%	Conforms
<b>NMR</b>		Conforms	Conforms
<b>MS</b>		Conforms	Conforms
<b>Residual Solvent</b>	Q/TFFK699—2006	NA	ND
<b>Water</b>	Q/TFFK699—2006	≤2%	Conforms
<b>Appearance</b>		Pale Brown Power	Conforms

**STORAGE CONDITIONS**

STORAGE

Refer to the label

SHELF LIFE

2 Years

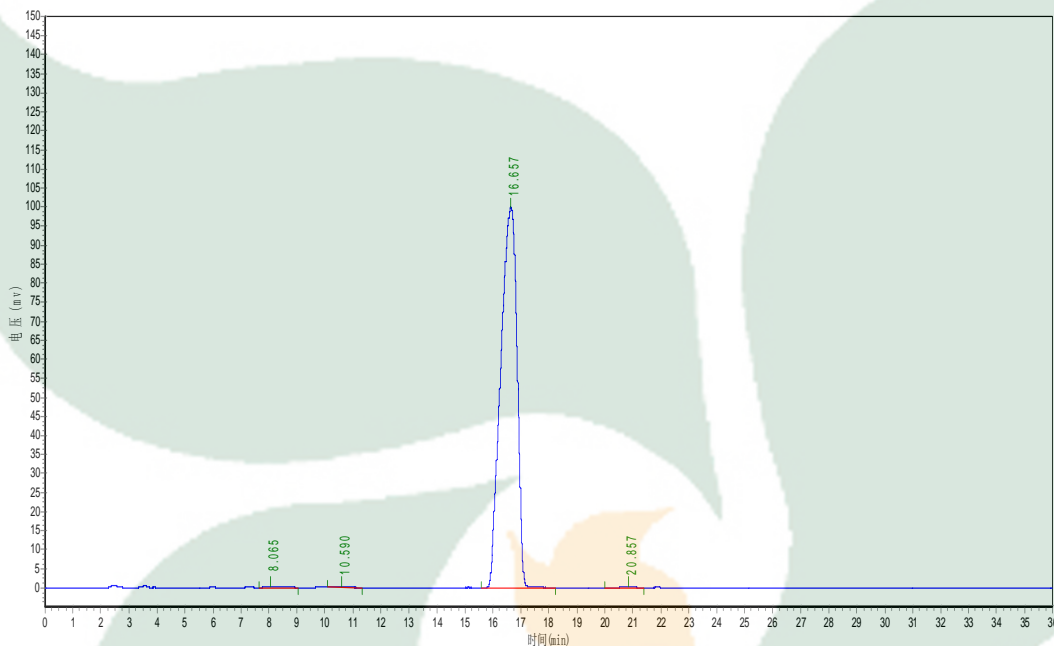
**Analyst**

**Checker**

**Manager**

# Product Analysis Report

Product Name: Epiberberine      Chrom-Column: C18  
Lot Number: 14122421      Mobile Phase: ACN:0.05mol/LKH<sub>2</sub>PO<sub>4</sub>  
Detector: UV      Wavelength: 345nm      =35:65  
Detect Time: 2014-12-24      Inject Vol: 20ul  
Analyst: shuzhilin      Flow: 1.0ml/min



No.	Ret.Time min	Height mAU	Area mAU*min	Rel.Area %
1	8.065	296.800	15533.900	0.3821
2	10.590	122.000	5694.491	0.1401
3	16.657	99844.000	4036807.500	99.2883
4	20.857	245.667	7706.984	0.1896