



同田生物
TAUTO BIOTECH

地址：上海市张江高科技园区爱迪生路326号 邮编：201203

销售热线：400-820-3059

86-21-51320588-8008/8035/8026/8025

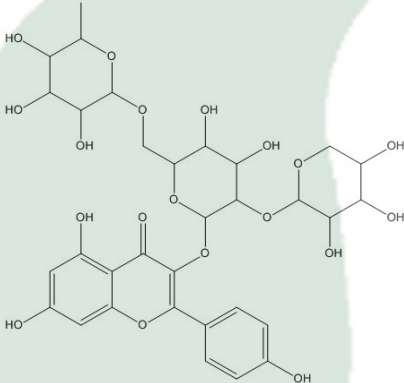
传真：86-21-51320502

QQ:800015916

MSN:Tauto_shanghai@hotmail.com

URL: www.tautobiotech.com

Mail: sales2@tautobiotech.com export2@tautobiotech.com

PRODUCT ID	E-1180	<p align="center">Structure</p> 
PRODUCT	Camelliaside B/山茶苷B	
STANDARD TYPE	Quantitative Reference Material (含量测定)	
LOT NUMBER	15020222	
ASSAY METHOD	HPLC,MS,NMR	
DATE OF SAMPLE	2015-02-02	
DATE OF REPORT	2015-02-02	

CHEMICAL NAME

OTHER NAME

CHEMICAL FORMULA

C32H38O19

MOLECULAR WEIGHT(MW)

726.64

CAS NUMBER

131573-90-5

CHEMICAL FAMILY

FROM

ANALYTICAL RESULT

TEST	METHOD	SPECIFICATION	RESULT
HPLC	Q/TFFK109—2007	NLT ≥97.0%	Conforms
NMR		Conforms	Conforms
MS		Conforms	Conforms
Residual Solvent	Q/TFFK109—2007	NA	ND
Water	Q/TFFK109—2007	≤2%	Conforms
Appearance		Pale Yellow Crystal	Conforms

STORAGE CONDITIONS

STORAGE

Refer to the label

SHELF LIFE

2 Years

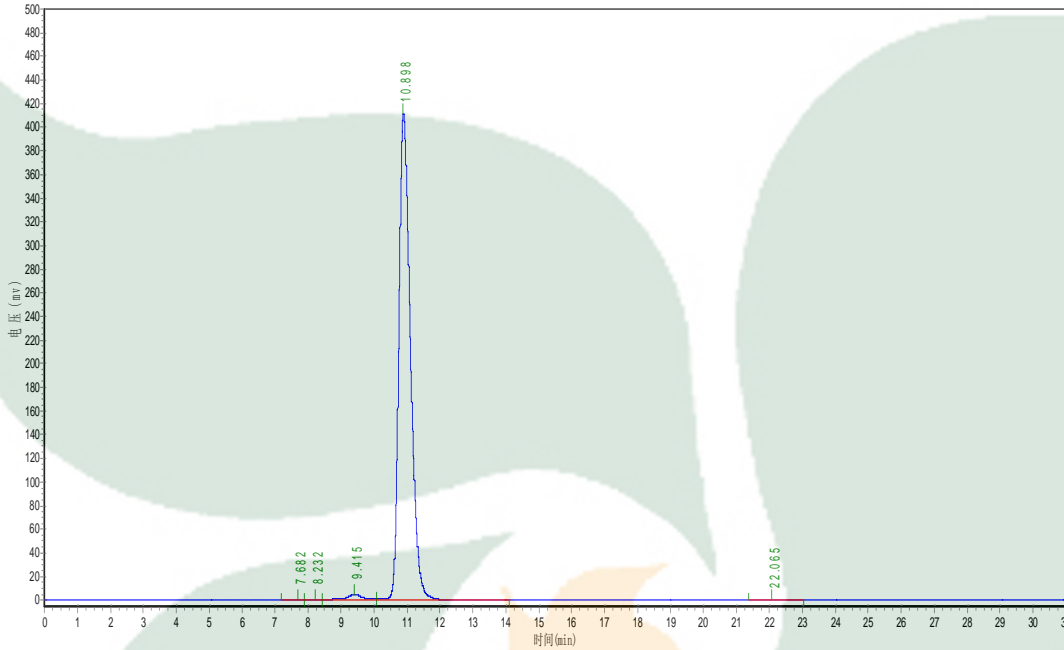
Analyst

Checker

Manager

Product Analysis Report

Product Name: Camelliaside B Chrom-Column: C18
Lot Number: 15020222 Mobile Phase: ACN:0.1% H_3PO_4 =18:82
Temperature: 25°C Wavelength: 330nm
Detect Time: 2015-02-02 Inject Vol: 20ul
Analyst: shuzhilin Flow: 1.0ml/min



No.	Ret.Time min	Height mAU	Area mAU*min	Rel.Area %
1	7.682	398.348	9010.997	0.0879
2	8.232	522.261	14037.395	0.1369
3	9.415	5007.043	189350.688	1.8471
4	10.898	407856.875	10012839.000	97.6729
5	22.065	690.000	26161.100	0.2552