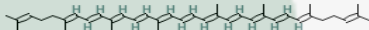


PRODUCT ID	E-0373	Structure 
PRODUCT	Lycopene /番茄红素	
STANDARD TYPE	Qualitative Analysis/鉴别用	
LOT NUMBER	15101627	
ASSAY METHOD	HPLC,MS,NMR	
DATE OF SAMPLE	2015-10-16	
DATE OF REPORT	2015-10-16	

CHEMICAL NAME

(6E,8E,10E,12E,14E,16E,18E,20E,22E,24E,26E)-
 2,6,10,14,19,23,27,
 31-octamethyldotriaconta-
 2,6,8,10,12,14,16,18,20,22,24,26,30-tridecaene

OTHER NAME
CHEMICAL FORMULA

C₄₀H₅₆

MOLECULAR WEIGHT(MW)

536.87264

CAS NUMBER

502-65-8

CHEMICAL FAMILY

Oils脂肪烃

FROM

茄科植物番茄Solanum lycopersicum L.

ANALYTICAL RESULT

TEST	METHOD	SPECIFICATION	RESULT
HPLC	Q/TFFK21—2004	Qualitative Analysis	Conforms
NMR		Conforms	Conforms
MS		Conforms	Conforms
Residual Solvent	Q/TFFK21—2004	NA	ND
Water	Q/TFFK21—2004	≤2%	Conforms
Appearance		Red Powder	Conforms

STORAGE CONDITIONS

STORAGE

Refer to the label

SHELF LIFE

2 Years

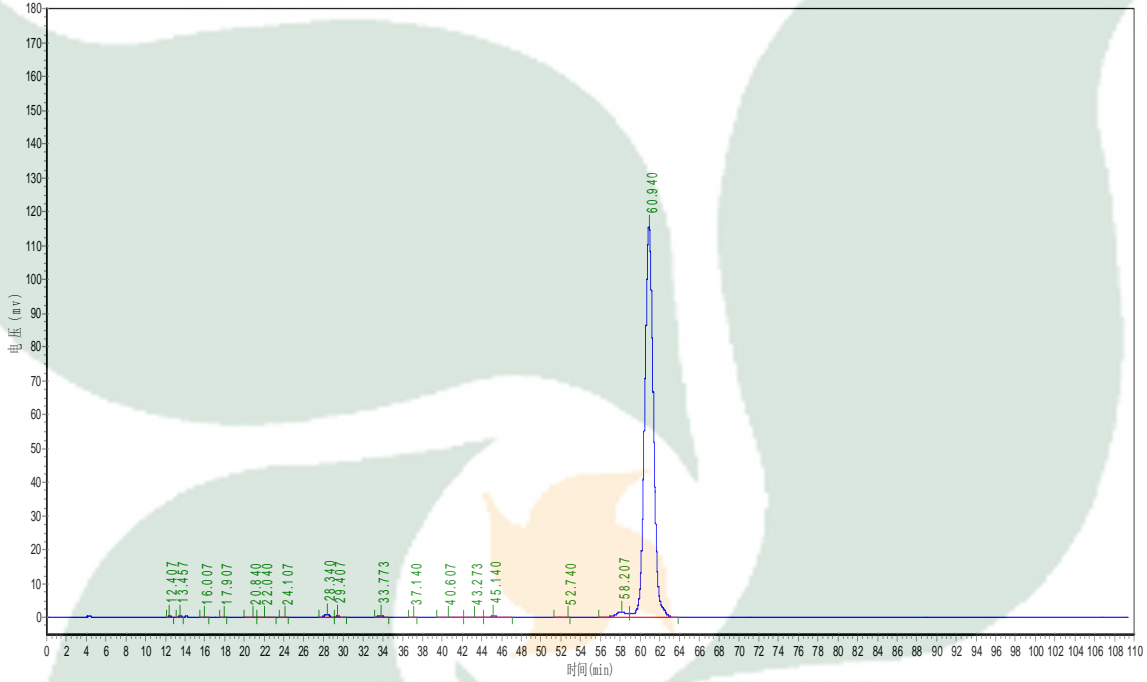
Analyst

Checker

Manager

Product Analysis Report

Product Name: Lycopene **Chrom-Column:** C18
Lot Number: 15101627 **Mobile Phase:** MeOH:ACN=10:90
Detector: UV **Wavelength:** 472nm
Detect Time: 2015-10-16 **Inject Vol:** 20ul
Analyst: zhufangfang **Flow:** 1.0ml/min



No.	Ret.Time min	Height mAU	Area mAU*min	Rel.Area %
1	12.407	262.535	5488.700	0.0741
2	13.457	206.902	4213.600	0.0568
3	16.007	151.265	3432.700	0.0463
4	17.907	115.456	3177.487	0.0429
5	20.840	198.476	7636.294	0.1030
6	22.040	204.222	9731.532	0.1313
7	24.107	133.173	5039.151	0.0680
8	28.340	914.807	31529.336	0.4254
9	29.407	319.217	10142.065	0.1368
10	33.773	560.585	18704.500	0.2524
11	37.140	112.286	3815.086	0.0515
12	40.607	197.480	14962.290	0.2019
13	43.273	114.557	8392.904	0.1132
14	45.140	332.530	23882.709	0.3222
15	52.740	54.029	3028.814	0.0409
16	58.207	1783.903	141569.578	1.9100
17	60.940	115507.984	7117117.000	96.0233