



**同田生物**  
**TAUTO BIOTECH**

地址：上海市张江高科技园区爱迪生路326号 邮编：201203

销售热线：400-820-3059

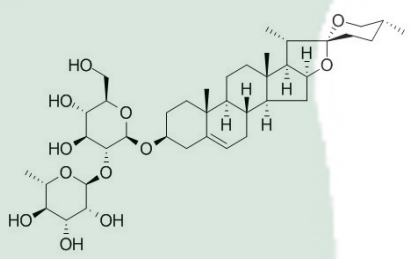
86-21-51320588-8008/8035/8026/8025

传真：86-21-51320502

QQ:800015916

URL: www.tautobiotech.com

Mail: sales2@tautobiotech.com export2@tautobiotech.com

<b>PRODUCT ID</b>	E-0896	<b>Structure</b> 
<b>PRODUCT</b>	Prosapogenin A/次皂甙元 A	
<b>STANDARD TYPE</b>	Quantitative Reference Material (含量测定)	
<b>LOT NUMBER</b>	17111322	
<b>ASSAY METHOD</b>	HPLC,NMR	
<b>DATE OF SAMPLE</b>	2017-11-13	
<b>DATE OF REPORT</b>	2017-11-13	

**OTHER NAME** 重楼皂苷V, 重楼皂苷E

**CHEMICAL FORMULA** C<sub>39</sub>H<sub>62</sub>O<sub>12</sub>

**MOLECULAR WEIGHT(MW)** 722.9

**CAS NUMBER** 19057-67-1

**CHEMICAL FAMILY** Steroids甾体类

**FROM** 薯蓣Chinese Yam

#### ANALYTICAL RESULT

TEST	METHOD	SPECIFICATION	RESULT
HPLC	Q/TFFK747—2010	NLT ≥98.0%	Conforms
NMR		Conforms	Conforms
MS		Conforms	Conforms
Residual Solvent	Q/TFFK747—2010	NA	ND
Water	Q/TFFK747—2010	≤2%	Conforms
Appearance		white Powder	Conforms

#### STORAGE CONDITIONS

STORAGE Refer to the label

SHELF LIFE 2 Years

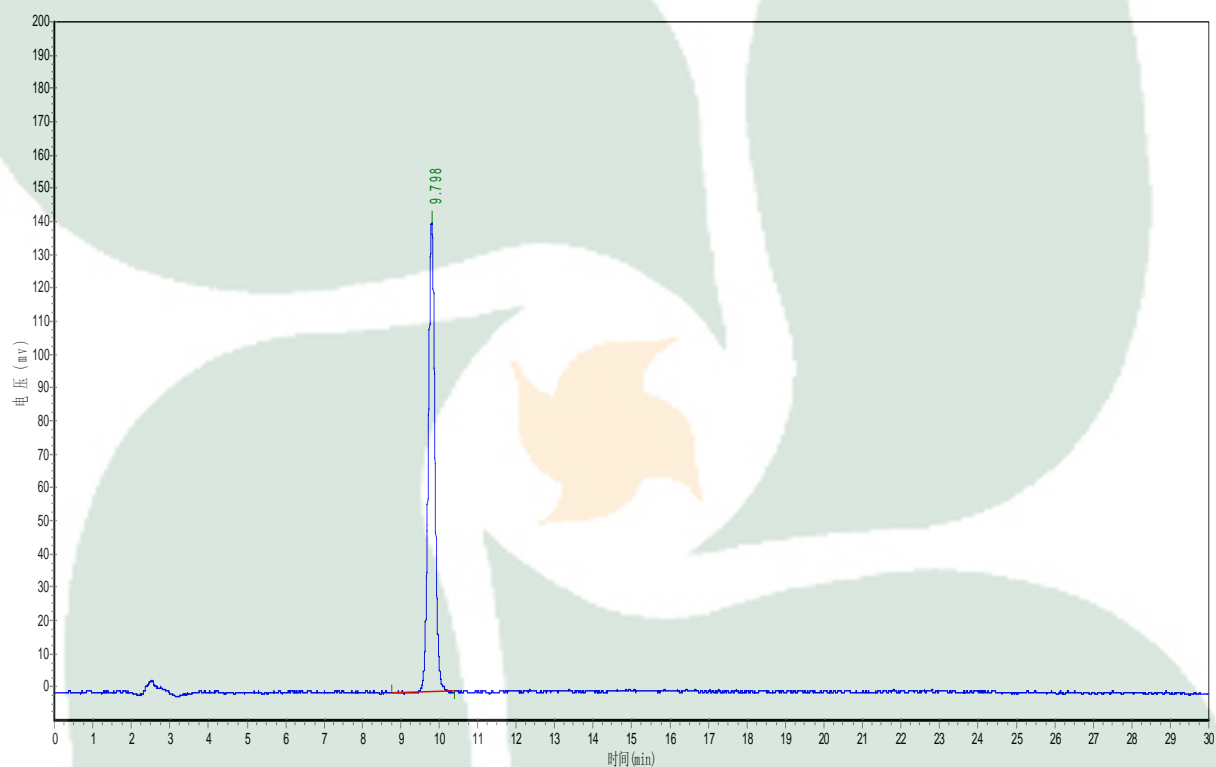
Analyst

Checker

Manager

# Product Analysis Report

**Product Name:** Prosapogenin A      **Chrom-Column:** Arcus C18  
**Lot Number:** 17111322      **Mobile Phase:** ACN:H2O (60:40)  
**Detect Time:** 13-Nov-17      **Detector:** ELSD  
**Inject Vol:** 20 $\mu$ L      **Tube Temp:** 105 $^{\circ}$ C  
**Flow:** 1.0ml/min      **Gas Flow:** 2.5L/min  
**Analyst:** zhanghong      **Impactor:** Off



No.	Ret.Time min	Height mAU	Area mAU*min	Rel.Area %
1	9.798	137538.922	1722672.625	100.0000